



**GRANTRUCK**

# **HYDRAULIC CATALOGUE**

GRANTRUCK Group

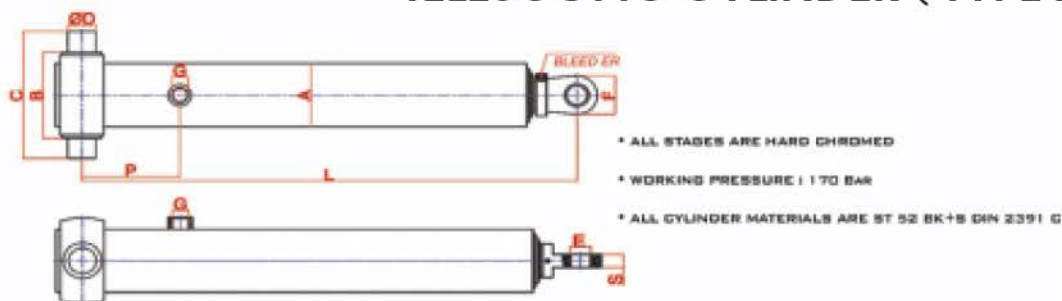
## LIFTING FORCE AT 170 BAR DUMPER CYLINDER



## 5 STAGES TELESCOPIC CYLINDER ( TYPE A )



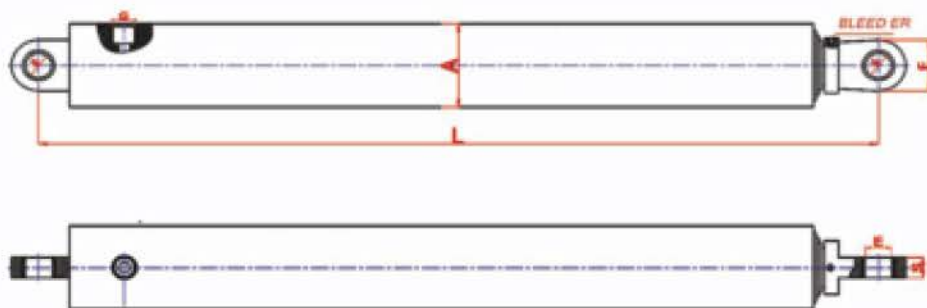
## TELESCOPIC CYLINDER ( TYPE A )



PRODUCT CODE	TYPE	ØA	B	C	ØD	ØE	F	G	L	S	P	STROKE	WEIGHT (kg)	LITER (dm <sup>3</sup> )
011340001	AT 115-3-4000 A	140	174	274	55	50	105	R¾"	1600	40	250	4000	154	48
012330001	AT 135-3-3000 A	165	205	325	65	50	110	R¾"	1290	40	210	3000	161	49
012333201	AT 135-3-3320 A	165	205	325	65	50	120	R¾"	1415	40	210	3320	180	58
012337201	AT 135-3-3720 A	165	205	325	65	50	120	R¾"	1550	40	250	3720	187	64
012340001	AT 135-3-4000 A	165	205	325	65	50	120	R¾"	1600	40	250	4000	192	67
012440001	AT 135-4-4000 A	165	205	325	65	50	105	R¾"	1290	40	210	4000	185	40
012445001	AT 135-4-4500 A	165	205	325	65	50	105	R¾"	1415	40	210	4500	205	50
013440001	AT 160-4-4000 A	190	235	355	65	50	110	R¾"	1290	40	210	4000	220	57
013445001	AT 160-4-4500 A	190	235	355	65	50	110	R¾"	1415	40	210	4500	237	66
013447501	AT 160-4-4750 A	190	235	355	65	50	110	R¾"	1500	40	210	4750	248	70
013500001	AT 160-5-5000 A	190	235	355	65	50	105	R¾"	1370	40	210	5000	223	71
013555001	AT 160-5-5500 A	190	235	355	65	50	105	R¾"	1415	40	210	5500	254	96
014550001	AT 185-5-5000 A	220	255	370	65	50	110	R¾"	1380	40	210	5000	298	97
014555001	AT 185-5-5500 A	220	255	370	65	50	110	R¾"	1415	40	310	5500	306	103
014557501	AT 185-5-5750 A	220	255	370	65	50	110	R¾"	1450	40	310	5750	314	109
014560551	AT 185-5-6055 A	220	255	370	65	50	110	R¾"	1550	40	310	6055	321	115
014564001	AT 185-5-6400 A	220	255	370	65	50	110	R¾"	1750	40	500	6400	330	121
015555001	AT 215-5-5500 A	245	295	410	68	50	120	R1"	1415	40	310	5500	410	160
015557501	AT 215-5-5750 A	245	295	410	68	50	120	R1"	1450	40	310	5750	418	166
015560551	AT 215-5-6055 A	245	295	410	68	50	120	R1"	1550	40	500	6055	436	175
015564001	AT 215-5-6400 A	245	295	410	68	50	120	R1"	1750	40	500	6400	490	202
015570001	AT 215-5-7000 A	245	295	410	68	50	120	R1"	1900	40	500	7000	515	210



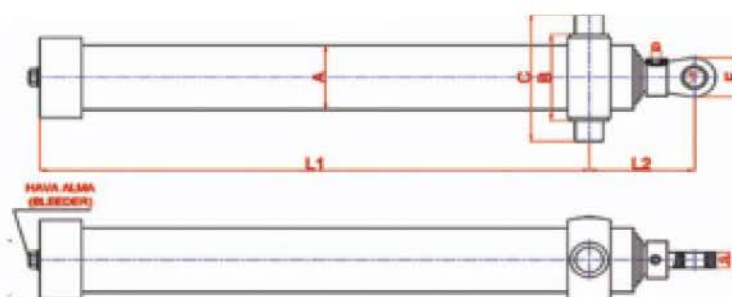
## TELESCOPIC CYLINDER ( TYPE B )



- ALL STAGES ARE HARD CHROMED
- WORKING PRESSURE : 170 BAR
- ALL CYLINDER MATERIALS ARE ST 52 BK+S DIN 2391 C

PRODUCT CODE	TYPE	ØA	ØE	F	G	L	S	STROKE	WEIGHT (kg)	LITER (dm <sup>3</sup> )
011324802	AT 115-3-2480 B	140	50	105	R¾"	1180	40	2480	100	23
011330002	AT 115-3-3000 B	140	50	105	R¾"	1290	40	3000	105	26
012424802	AT 135-4-2480 B	165	50	105	R¾"	1000	40	2480	110	29
012432802	AT 135-4-3280 B	165	50	105	R¾"	1200	40	3280	138	34
012440002	AT 135-4-4000 B	165	50	105	R¾"	1390	40	4000	168	40
012444002	AT 135-4-4400 B	165	50	105	R¾"	1535	40	4428	195	50
013440002	AT 160-4-4000 B	190	50	110	R¾"	1390	40	4000	190	57
013444002	AT 160-4-4400 B	190	50	110	R¾"	1535	40	4428	215	66
013447002	AT 160-4-4750 B	190	50	110	R¾"	1600	40	4750	225	69
013450002	AT 160-4-5000 B	190	50	110	R¾"	1655	40	5000	232	71
013525002	AT 160-5-2500 B	190	50	110	R¾"	860	40	2470	134	40
013557002	AT 160-5-5700 B	190	50	110	R¾"	1510	40	5535	242	76
014557002	AT 185-5-5700 B	220	50	110	R¾"	1510	40	5508	298	103
015557002	AT 215-5-5700 B	245	50	120	R¾"	1510	40	5485	390	160

## TELESCOPIC CYLINDER ( TYPE C )



- ALL STAGES ARE HARD CHROMED
- WORKING PRESSURE : 170 BAR
- ALL CYLINDER MATERIALS ARE ST 52 BK+S DIN 2391 C

PRODUCT CODE	TYPE	ØA	B	C	ØD	ØE	F	G	L1	L2	S	STROKE	WEIGHT (kg)	LITER (dm <sup>3</sup> )
011330003	AT 115-3-3000 C	140	174	274	55	50	105	R <sup>3</sup> / <sub>4</sub> "	1150	180	40	3000	127	34
011333203	AT 115-3-3320 C	140	174	274	55	50	105	R <sup>3</sup> / <sub>4</sub> "	1295	180	40	3320	145	41
011340003	AT 115-3-4000 C	140	174	274	55	50	105	R <sup>3</sup> / <sub>4</sub> "	1525	180	40	4000	154	48
012330003	AT 135-3-3000 C	165	205	325	65	50	110	R <sup>3</sup> / <sub>4</sub> "	1150	180	40	3000	161	49
012333203	AT 135-3-3320 C	165	205	325	65	50	120	R <sup>3</sup> / <sub>4</sub> "	1295	180	40	3320	180	58
012337203	AT 135-3-3720 C	165	205	325	65	50	120	R <sup>3</sup> / <sub>4</sub> "	1435	180	40	3720	187	64
012340003	AT 135-3-4000 C	165	205	325	65	50	120	R <sup>3</sup> / <sub>4</sub> "	1525	180	40	4000	192	67
012440003	AT 135-4-4000 C	165	205	325	65	50	105	R <sup>3</sup> / <sub>4</sub> "	1150	180	40	4000	190	40
012445003	AT 135-4-4500 C	165	205	325	65	50	105	R <sup>3</sup> / <sub>4</sub> "	1295	180	40	4500	211	50
013440003	AT 160-4-4000 C	190	235	355	65	50	110	R <sup>3</sup> / <sub>4</sub> "	1150	180	40	4000	245	57
013445003	AT 160-4-4500 C	190	235	355	65	50	110	R <sup>3</sup> / <sub>4</sub> "	1295	180	40	4500	237	66
013447503	AT 160-4-4750 C	190	235	355	65	50	110	R <sup>3</sup> / <sub>4</sub> "	1385	180	40	4750	248	70
013550003	AT 160-5-5000 C	190	235	355	65	50	110	R <sup>3</sup> / <sub>4</sub> "	1245	180	40	5000	223	71
013555003	AT 160-5-5500 C	190	235	355	65	50	110	R <sup>3</sup> / <sub>4</sub> "	1295	180	40	5500	265	76
014550003	AT 185-5-5000 C	220	255	370	65	50	110	R <sup>3</sup> / <sub>4</sub> "	1245	180	40	5000	298	97
014555003	AT 185-5-5500 C	220	255	370	65	50	110	R <sup>3</sup> / <sub>4</sub> "	1295		40	5512	324	103
014557503	AT 185-5-5750 C	220	255	370	65	50	110	R <sup>3</sup> / <sub>4</sub> "	1345	180	40	5750	330	109
015555003	AT 215-5-5500 C	245	295	410	68	50	120	R1"	1295	200	40	5500	422	160

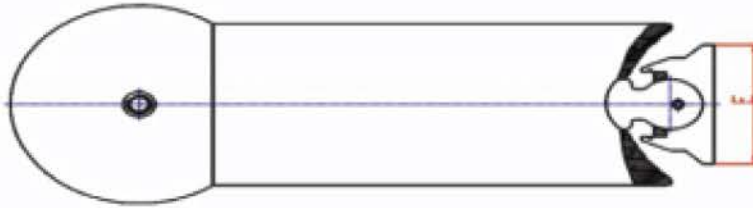
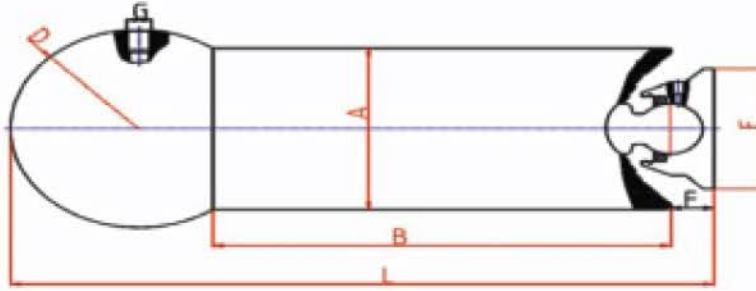
## TELESCOPIC CYLINDER ( TYPE D )



- ALL STAGES ARE HARD CHROMED
- WORKING PRESSURE : 170 BAR
- ALL CYLINDER MATERIALS ARE ST 52 BK+S DIN 2391 C

PRODUCT CODE	TYPE	ØA	ØD	ØE	F	G	B	L	S	M	STROKE	WEIGHT (kg)	LITER (dm <sup>3</sup> )
012427004	AT 135-4-2700 D	165	50	50	105	R <sup>3</sup> / <sub>4</sub> "	205	1000	40	215	3000	127	34
012436004	AT 135-4-3600 D	165	50	50	105	R <sup>3</sup> / <sub>4</sub> "	205	1200	40	215	3660	146	36
012446004	AT 135-4-4000 D	165	50	50	105	R <sup>3</sup> / <sub>4</sub> "	205	1360	40	215	4000	173	42
012446004	AT 135-4-4400 D	165	50	50	105	R <sup>3</sup> / <sub>4</sub> "	205	1515	40	215	4428	205	50
013440004	AT 160-4-4000 D	190	50	50	110	R <sup>3</sup> / <sub>4</sub> "	235	1370	40	245	4000	218	57
013445004	AT 160-4-4500 D	190	50	50	110	R <sup>3</sup> / <sub>4</sub> "	235	1530	40	245	4428	243	66
013447504	AT 160-4-4750 D	190	50	50	110	R <sup>3</sup> / <sub>4</sub> "	235	1610	40	245	4750	255	70
013451404	AT 160-4-5140 D	190	50	50	110	R <sup>3</sup> / <sub>4</sub> "	235	1710	40	245	5140	264	74
014447504	AT 185-4-4750 D	215	50	50	110	R <sup>3</sup> / <sub>4</sub> "	350	1610	40	275	4750	306	101
014451404	AT 185-4-5140 D	215	50	50	110	R <sup>3</sup> / <sub>4</sub> "	350	1710	40	275	5140	321	108
014550004	AT 185-5-5000 D	215	50	50	110	R <sup>3</sup> / <sub>4</sub> "	350	1410	40	275	5000	304	100
014555004	AT 185-5-5500 D	215	50	50	110	R <sup>3</sup> / <sub>4</sub> "	350	1510	40	275	5500	310	104
014557504	AT 185-5-5750 D	215	50	50	110	R <sup>3</sup> / <sub>4</sub> "	350	1560	40	275	5750	321	108
014560554	AT 185-5-6055 D	215	50	50	110	R <sup>3</sup> / <sub>4</sub> "	350	1640	40	275	6055	330	117
015550004	AT 215-5-5000 D	245	50	50	120	R1"	350	1410	40	310	5000	415	148
015555004	AT 215-5-5500 D	245	50	50	120	R1"	350	1510	40	310	5500	430	160
015557504	AT 215-5-5750 D	245	50	50	120	R1"	500	1560	40	310	5750	440	167
015560554	AT 215-5-6055 D	245	50	50	120	R1"	500	1640	40	310	6055	450	175
015564004	AT 215-5-6400 D	245	50	50	120	R1"	500	1740	40	310	6400	495	202
015570004	AT 215-5-7000 D	245	50	50	120	R1"	500	1940	40	310	7000	525	215

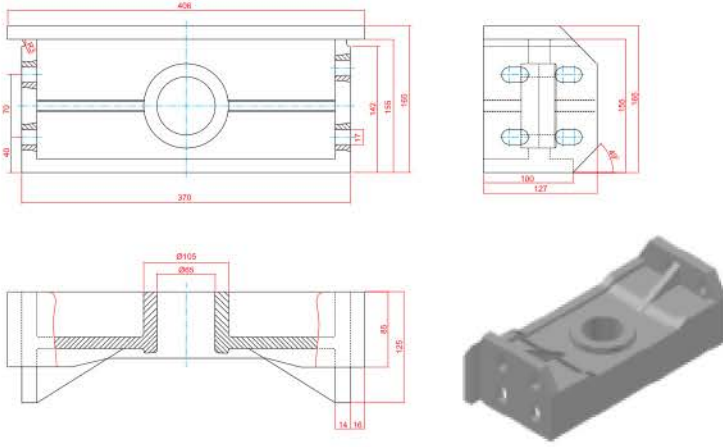
## UNDER BODY CYLINDERS



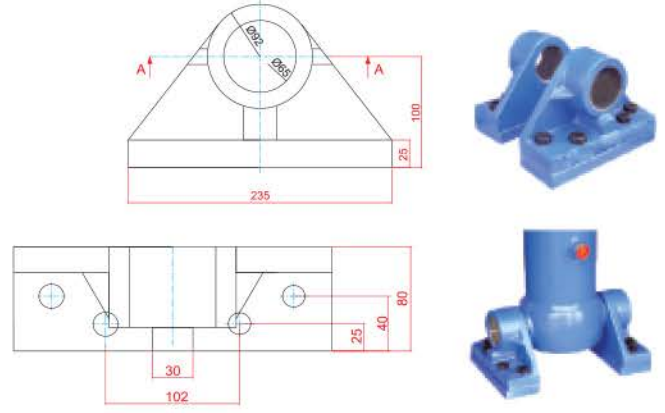
TIP/TYPE	ØA	B	ØD	ØE	F	G	L	H STROK	KG	MAX ÇALIŞMA BASINCI (BAR)	YAĞ HACMİ (L)
HDC 5x1300xØ55	175	250	215	130	36	R <sup>3</sup> / <sub>4</sub> "	455	1234	85	170	12
HDC 5x1800xØ55	175	350	215	130	36	R <sup>3</sup> / <sub>4</sub> "	555	1734	93	170	16



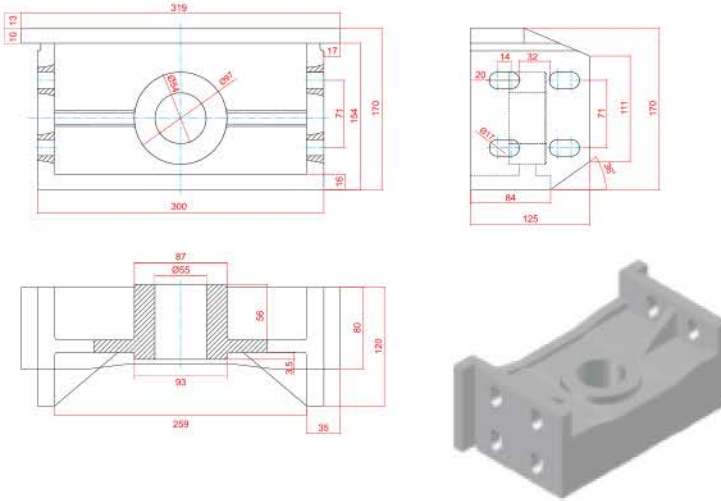
**DİKTÖRTGEN KESİTLİ BÜYÜK KARE BRAKET**  
Cutted like rectangular big cup bracket



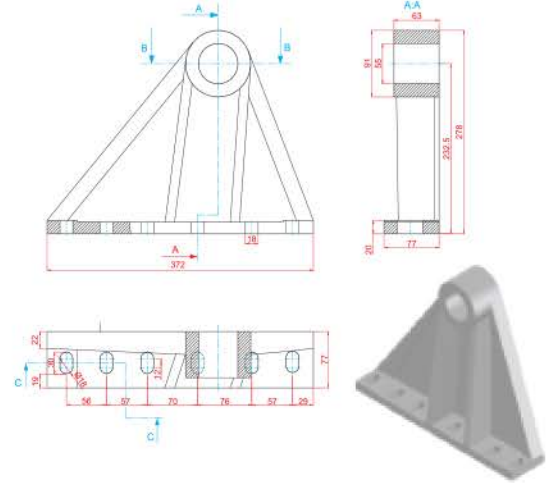
**STANDART BRAKET**  
Standart bracket



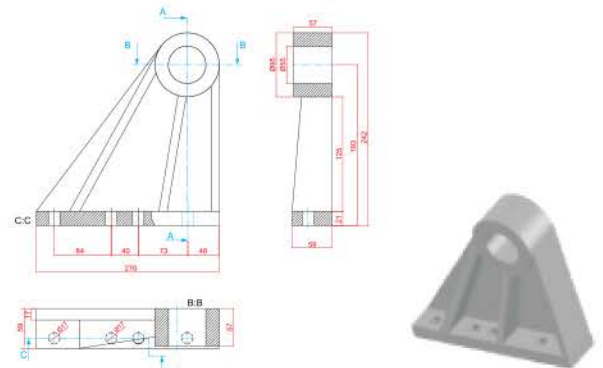
**DİKTÖRTGEN KESİTLİ KÜÇÜK KARE BRAKET**  
Cutted like rectogular Small cup bracket



**BÜYÜK BOY KASA BRAKET**  
Big cup bracket



**ORTA BOY KASA BRAKET**  
Medium cup bracket



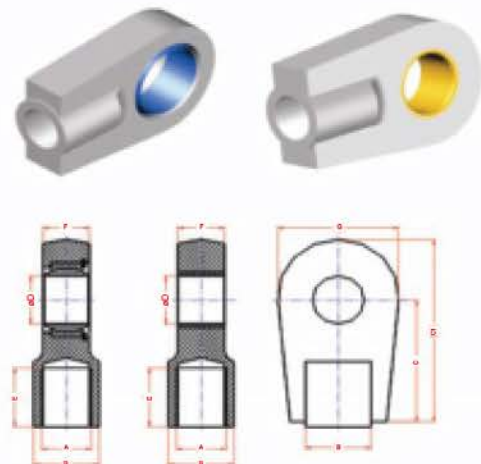
# DOUBLE ACTING CYLINDERS



## DOUBLE ACTING CYLINDERS STANDART CONNECTING SPARE PARTS

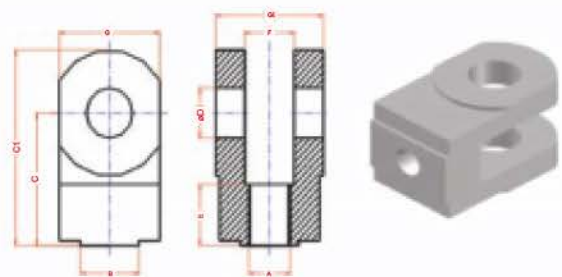
### ROD CLEVIS

PISTON	M	A	B	C	C1	D	E	F	G
Ø32	18	M14x1.5	21	44	64	16	19	13	40
Ø40	22	M16x1.5	25	52	77	20	23	17	47
Ø50	28	M20x1.5	30	65	96	25	29	21	58
Ø63	36	M27x2.0	38	80	118	30	37	27	70
Ø80	45	M33x2.0	47	97	145.5	40	46	32	89
Ø100	56	M42x2.0	58	120	179	50	57	40	108
Ø125	70	M48x2.0	70	140	211	60	64	52	132
Ø140	80	M56x2.0	80	160	245	70	76	57	155
Ø160	90	M64x3.0	90	180	270	80	86	66	168
Ø180	100	M72x3.0	100	195	296	90	91	72	185
Ø200	110	M80x3.0	110	210	322	100	96	84	210



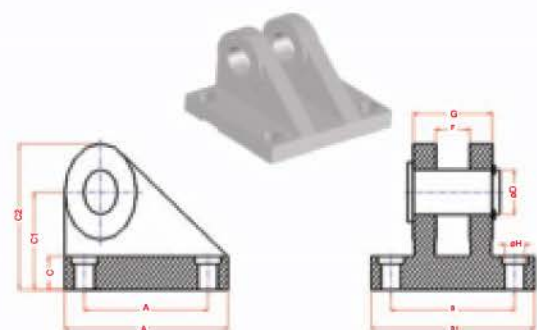
### U-TYPE CONNECTION

PISTON	M	A	B	C	C1	D	E	F	G	G1
Ø32	18	M14x1.5	21	44	64	16	19	16	32	36
Ø40	22	M16x1.5	25	52	77	20	23	20	40	45
Ø50	28	M20x1.5	30	65	96	25	29	25	50	56
Ø63	36	M27x2.0	38	80	118	30	37	32	65	70
Ø80	45	M33x2.0	47	97	145.5	40	46	40	80	90
Ø100	56	M42x2.0	58	120	179	50	57	50	100	110
Ø125	70	M48x2.0	70	140	211	60	64	63	130	140
Ø140	80	M56x2.0	80	160	245	70	76	70	145	155
Ø160	90	M64x3.0	90	180	270	80	86	80	160	170
Ø180	100	M72x3.0	100	195	296	90	91	90	180	190
Ø200	110	M80x3.0	110	210	322	100	96	100	200	210



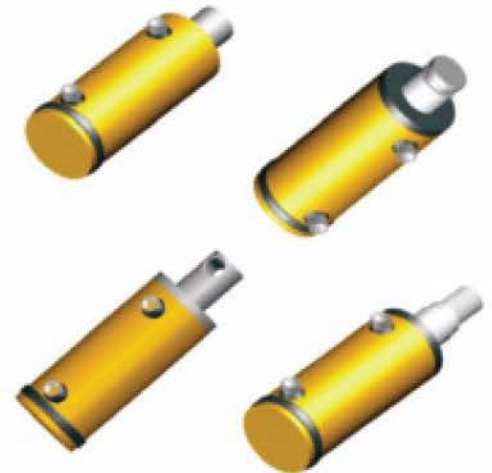
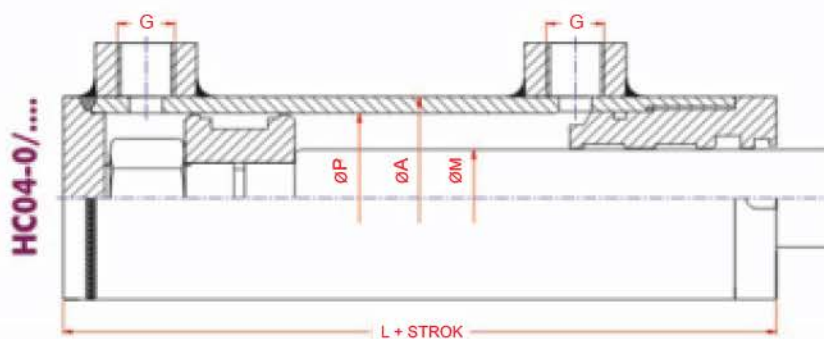
### FOOT CONNECTION

PISTON	A	B	C	C1	C2	D	E	F	G	G1
Ø32	55	80	13	40	56	16	16	36	90	65
Ø40	70	95	15	45	65	20	20	45	100	75
Ø50	85	115	18	55	80	25	25	56	120	85
Ø63	110	145	22	65	97	30	32	70	145	110
Ø80	125	170	24	76	116	40	40	90	185	130
Ø100	150	200	30	95	145	50	50	110	215	170
Ø125	170	230	37	112	175	60	63	140	270	210
Ø160	210	280	43	149	220	80	80	170	320	250

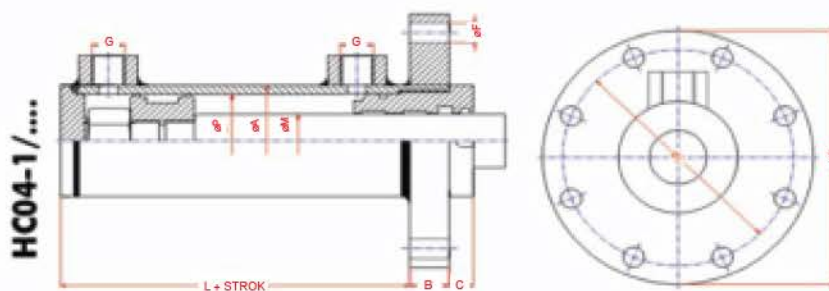




## DOUBLE ACTING HYDRAULIC CYLINDERS



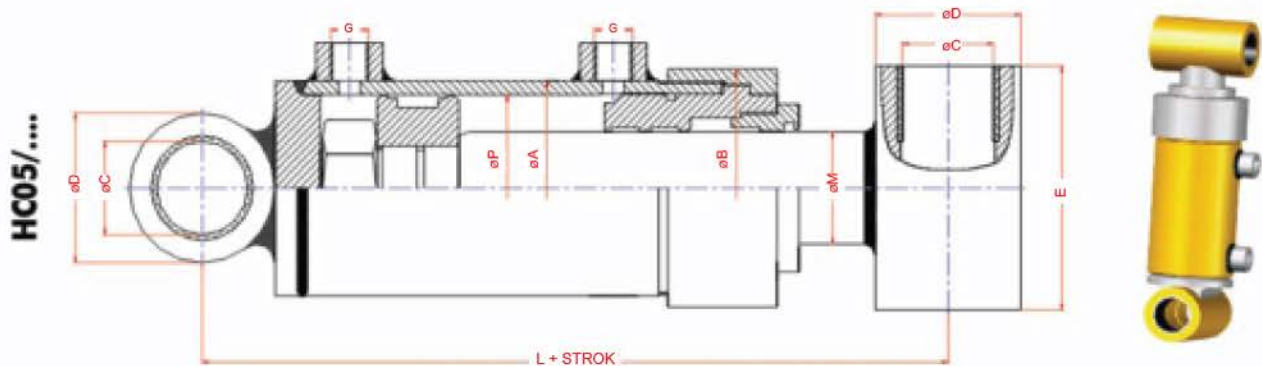
PISTON	Ø40	Ø50	Ø63	Ø70	Ø80	Ø90	Ø100	Ø115	Ø125	Ø140	Ø160
M	22/25/28	25/28/30	36/40/45	45/50	40/45/50	50/60	50/60/70	70	60/70	70/90	90/100
A	50	60	75	85	100	110	120	130	150	165	190
L	126	128	159	159	173	176	182	192	199	225	231
G	R 3/8"	R 3/8"	R 1/2"	R 1/2"	R 1/2"	R 1/2"	R 1/2"	R 1/2"	R 3/4"	R 3/4"	R 3/4"



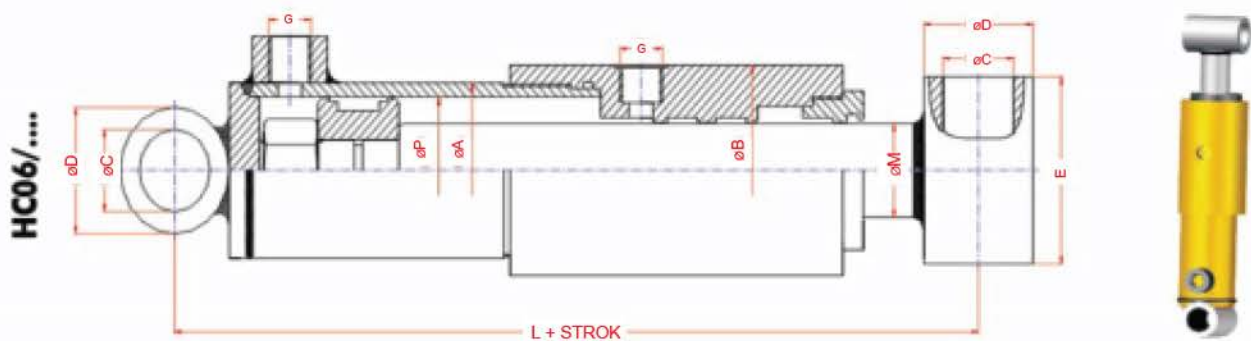
PISTON	Ø40	Ø50	Ø63	Ø70	Ø80	Ø90	Ø100	Ø115	Ø125	Ø140	Ø160
M	22/25/28	25/28/30	36/40/45	45/50	40/45/50	50/60	50/60/70	70	60/70	70/90	90/100
A	50	60	75	85	100	110	120	130	150	165	190
B	16	20	25	25	25	30	30	30	30	35	35
C	10	10	15	15	16	15	15	17	17	20	20
D	97	110	137	147	155	165	195	210	236	251	266
E	78	88	112	122	125	135	157	172	199	215	230
F	9	9	13	13	17	17	22	22	22	22	22
G	R 3/8"	R 3/8"	R 1/2"	R 1/2"	R 1/2"	R 1/2"	R 1/2"	R 1/2"	R 3/4"	R 3/4"	R 3/4"
L	100	98	119	119	132	131	137	145	152	170	176



## DOUBLE ACTING HYDRAULIC CYLINDERS

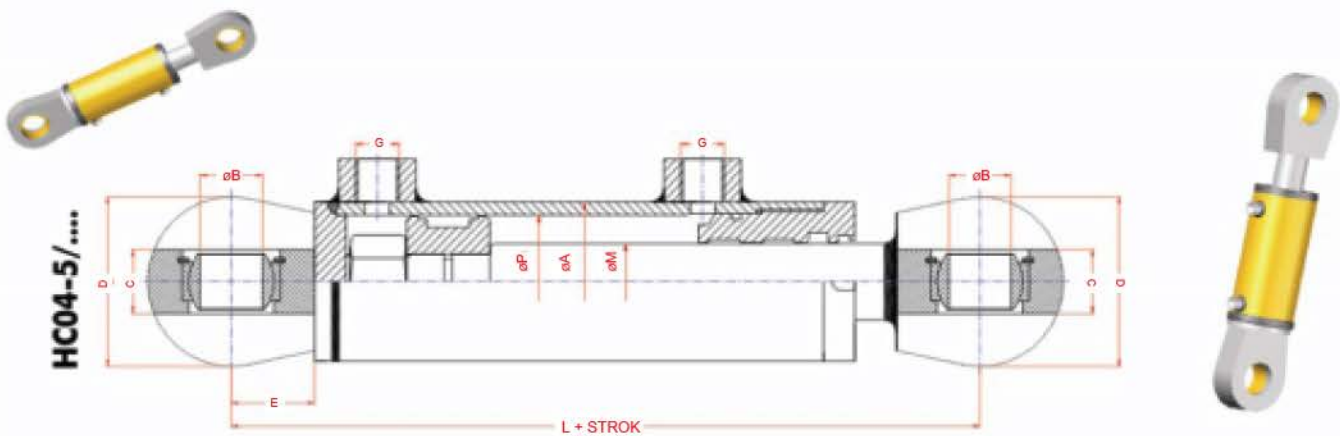
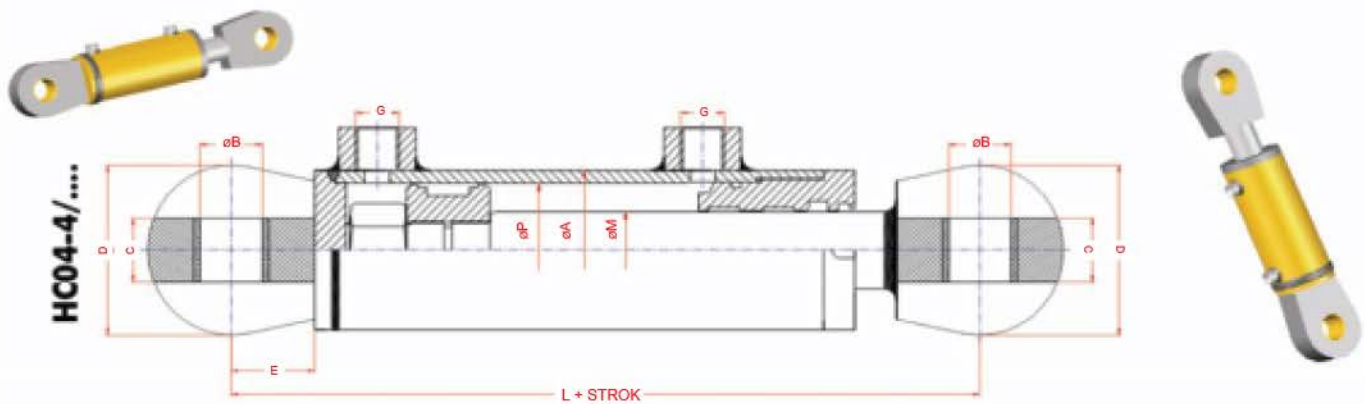


PISTON	M	A	B	C	D	E	L	G
Ø90	60	110	123	50	80	120	300	R 1/2"
Ø100	60	120	133	50	80	130	310	R 1/2"
Ø100	70	120	133	50	80	130	310	R 1/2"
Ø115	70	130	143	60	90	140	320	R 1/2"
Ø125	80	150	163	60	90	160	340	R 1/2"
Ø140	80	165	178	60	90	175	350	R 3/4"
Ø160	90	190	203	70	110	200	370	R 3/4"



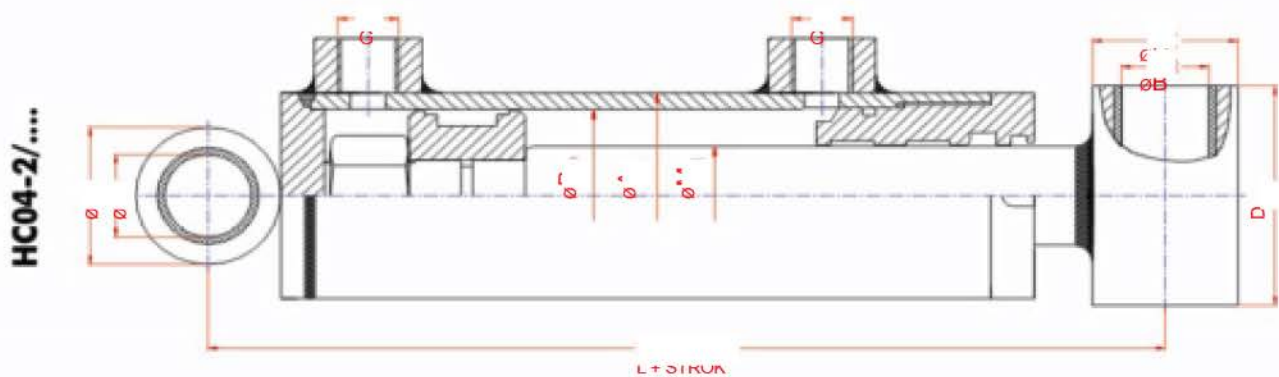
PISTON	M	A	B	C	D	E	L	G
Ø50	40	60	65	30	50	70	260	R 1/2"
Ø63	40	75	90	35	55	85	260	R 1/2"
Ø63	45	75	90	35	55	85	270	R 1/2"
Ø70	50	85	100	40	60	95	290	R 1/2"
Ø80	50	95	110	40	60	105	290	R 1/2"

## DOUBLE ACTING HYDRAULIC CYLINDERS



PISTON	Ø40	Ø50	Ø63	Ø70	Ø80	Ø90	Ø100	Ø115	Ø125	Ø140	Ø160
M	22/25/28	25/28/30	36/40/45	45/50	40/45/50	50/60	50/60/70	70	60/70	70/90	90/100
A	50	60	75	85	100	110	120	130	150	165	190
B	20	25	30	35	40	45	50	50	60	70	80
C	20	25	30	30	35	35	40	40	50	60	60
D	55	65	80	90	100	110	125	135	140	170	190
E	30	35	40	40	50	50	60	60	80	90	100
G	R 3/8"	R 3/8"	R 1/2"	R 1/2"	R 1/2"	R 1/2"	R 1/2"	R 1/2"	R 3/4"	R 3/4"	R 3/4"
L	206	218	259	259	298	301	332	342	389	440	466

## HCO4-2 DOUBLE ACTING HYDRAULIC CYLINDERS

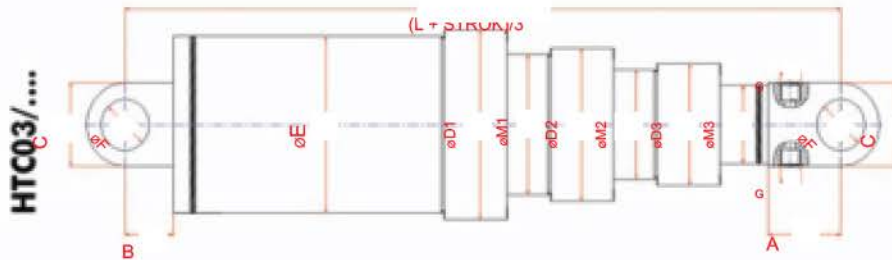


PISTON	Ø40	Ø50	Ø63	Ø70	Ø80	Ø90	Ø100	Ø115	Ø125	Ø140	Ø160
M	22/25/28	25/28/30	36/40/45	45/50	40/45/50	50/60	50/60/70	70	60/70	70/90	90/100
A	50	60	75	85	100	110	120	130	150	165	190
B	20	25	30	35	40	45	50	50	60	70	80
C	40	45	60	65	75	80	90	90	100	120	130
D	55	65	80	90	105	115	125	135	155	170	195
G	R 3/8"	R 3/8"	R 1/2"	R 1/2"	R 1/2"	R 1/2"	R 1/2"	R 1/2"	R 3/4"	R 3/4"	R 3/4"
L	186	193	239	244	273	1281	302	312	329	380	396

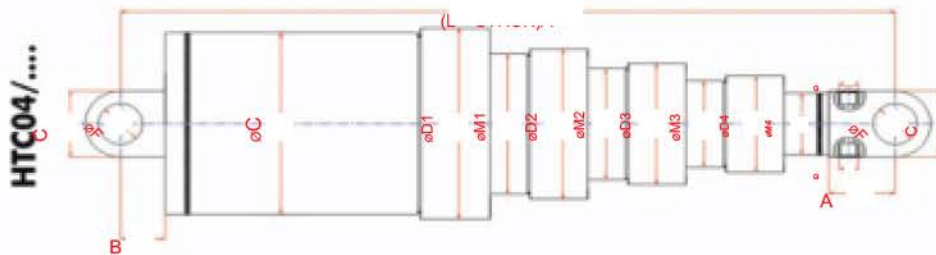
## DOUBLE ACTING HYDRAULIC CYLINDERS



	M1	M2	A	B	C	D1	D2	E	F	G	L
HTC02-050	75	50	75	50	80	117	87	110	52	R 1/2"	800
HTC02-065	95	65	75	60	80	142	107	130	52	R 1/2"	860
HTC02-070	105	75	75	50	80	147	117	140	52	R 1/2"	845



	M1	M2	M3	A	B	C	D1	D2	D3	E	F	G	L
HTC03-050	105	75	50	75	50	80	147	117	87	140	52	R 1/2"	1390
HTC03-065	130	95	65	75	60	80	177	142	107	165	52	R 1/2"	1470
HTC03-075	135	105	75	75	50	80	182	147	117	170	52	R 1/2"	1440



	M1	M2	M3	M4	A	B	C	D1	D2	D3	D4	E	F	G	L
HTC04-050	135	105	75	50	75	50	80	182	147	117	87	170	52	R 1/2"	2055
HTC04-065	165	130	95	65	75	60	80	225	177	142	107	210	52	R 1/2"	2180
HTC04-075	170	135	105	75	75	50	80	231	182	147	117	220	52	R 1/2"	2118



## PISTON PUMPS



**BENT AXIS PISTON PUMPS**  
**6 PISTON PUMPS**  
**9 PISTON PUMPS**

## HYDRAULIC 6 PISTON PUMP



### Kullanıldığı Alanlar / Use On

- Damperli Araçlar / Dump Trucks
- Çöp Araçları / Refuse Trucks
- Traktör Kepçeleri / Tractor Ladles

### Bağlantılı Şekli / Mounting Type

- Akuple Bağlantılı
- Coupled Mounting

### Dönüş Yönü / Rotation

- Sağ - Sol
- Right - Left

Pompa Tipi Pump Type	Ürün Kodu Prod.Code	Yer Değiştirme Displacement	Sürekli Basınç Pressure Continuous	Ani Basınç Pressure Peak	Sürekli Max. Hız Continuous Max. Speed	Ani Max. Hız Peak Max. Speed	Ağırlık Weight kg
		Cm <sup>3</sup> / dev	Bsr / psi	Min - 1			
40cc 6 PISTON PUMP TYPE A	AT 040 PP	43,8 2,66	200 2900	300 4350	800	1200	14
60cc 6 PISTON PUMP TYPE A	AT 060 PP	57,8 3,52	220 3190	320 4640	800	1200	14

## HYDRAULIC 9 PISTON PUMP



### Kullanıldığı Alanlar / Use On

- Damperli Araçlar / Dump Trucks
- Çöp Araçları / Refuse Trucks
- Traktör Kepçeleri / Tractor Ladles

### Bağlantılı Şekli / Mounting Type

- Akuple Bağlantılı
- Coupled Mounting

### Dönüş Yönü / Rotation

- Sağ - Sol
- Right - Left

Pompa Tipi Pump Type	Ürün Kodu Prod.Code	Yer Değiştirme Displacement	Sürekli Basınç Pressure Continuous	Ani Basınç Pressure Peak	Sürekli Max. Hız Continuous Max. Speed	Ani Max. Hız Peak Max. Speed	Ağırlık Weight
		Cm <sup>3</sup> / dev	Bsr / psi	Min - l	kg		
60cc 9 PISTON PUMP TYPE A	AT 061 PP	57,8 3,52	220 3190	320 4640	800	1200	20
80cc 9 PISTON PUMP TYPE A	AT 080 PP	77,5 4,73	200 2900	300 4350	800	1200	20

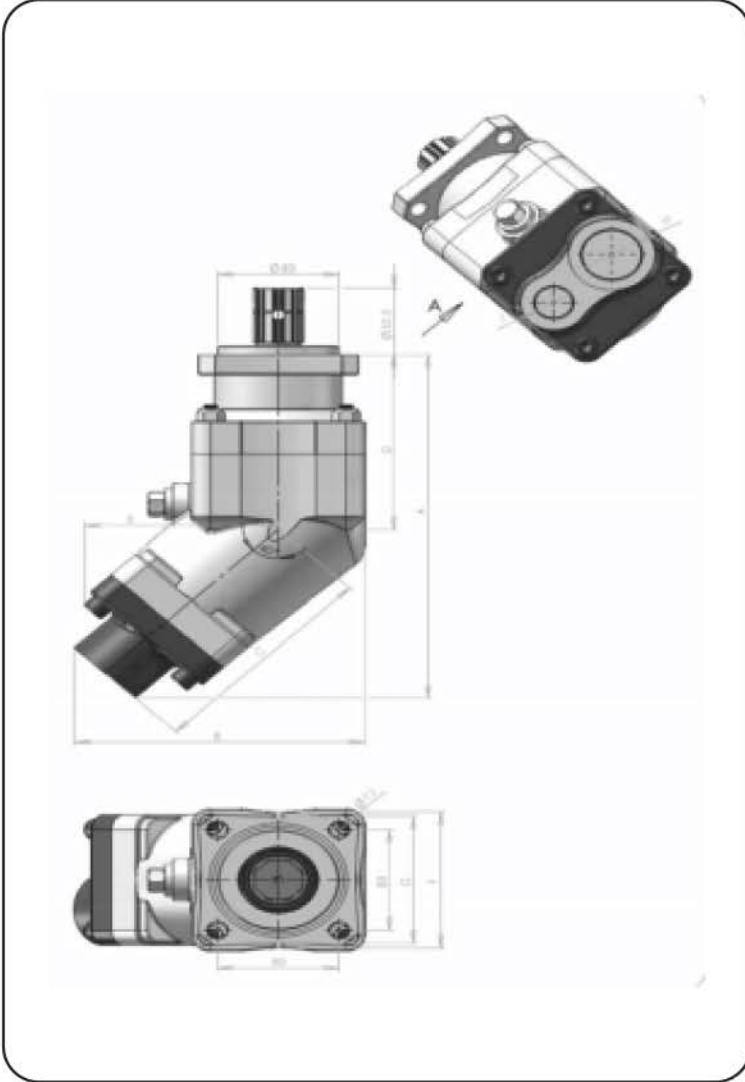
## BENT AXIS PISTN PUMPS



Pompa Tipi Pump Type	Ürün Kodu Prod. Code	Yer Değiştirme Displacement	Sürekli Basınç Pressure Continuous	Sürekli Max. Hız Continuous Max. Speed	Ağırlık Weight
		Cm 3 / rev	Bar / psi	Min -1	
65 lt	013010	63,2	350 5076	1800 - 2400	10
85 lt	013020	85,1	350 5076	1400 - 1900	12,5
105 lt	013030	105,7	350 5076	1400 - 1900	12,5



## 65cc BENT AXIS PISTON PUMP



### Kullanıldığı Alanlar / Use On

- Damperli Araçlar / Dump Trucks
- Çöp Araçları / Refuse Trucks
- Traktör Kepçeleri / Tractor Ladles

### Bağlantılı Şekli / Mounting Type

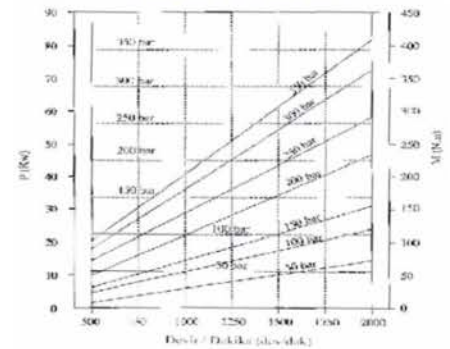
- Akuple Bağlantılı
- Coupled Mounting

### Dönüş Yönü / Rotation

- Sağ - Sol
- Right - Left

Pompa Tipi Pump Type	Ürün Kodu Prod. Code		Akışkan Fluid
	CW	CCW	
65 litre / 65 cc	AT 065 EP/R	AT 065 EP/L	Hidrolik mineral yağ ve yanmaya dayanıklı akışkanlar.  Mineral oil based hydraulic fluids to ISO/DIN and fire resistant fluids.
A	252		
B	163		
C	152		
D	115		
E	118		
F	108		
G	100		
H	1 1/4"		
J	3/4"		

### 65 litre / 65 cc



## 85cc BENT AXIS PISTON PUMP



### Kullanıldığı Alanlar / Use On

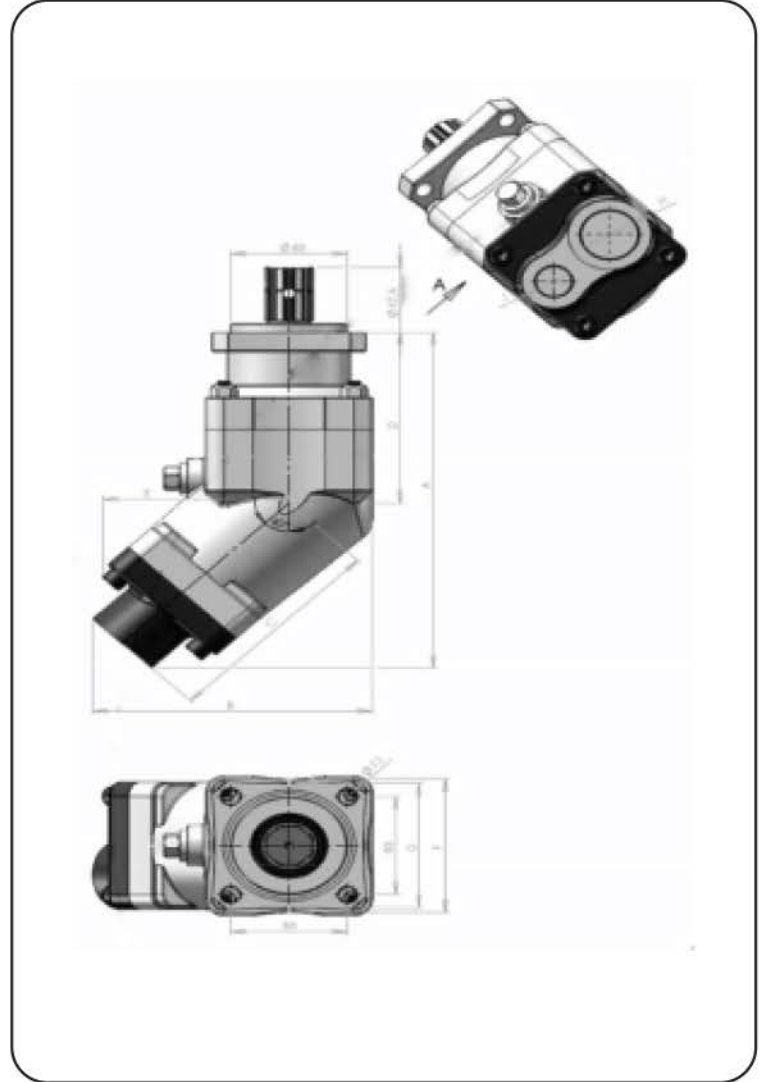
- Damperli Araçlar / Dump Trucks
- Çöp Araçları / Refuse Trucks
- Traktör Kepçeleri / Tractor Ladles

### Bağlantılı Şekli / Mounting Type

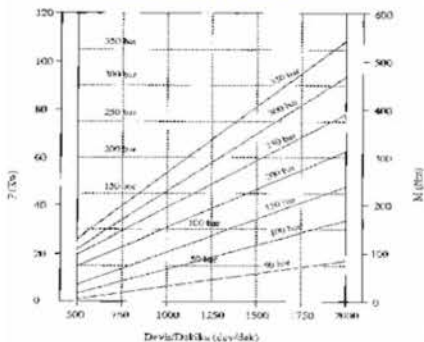
- Akuple Bağlantılı
- Coupled Mounting

### Dönüş Yönü / Rotation

- Sağ - Sol
- Right - Left

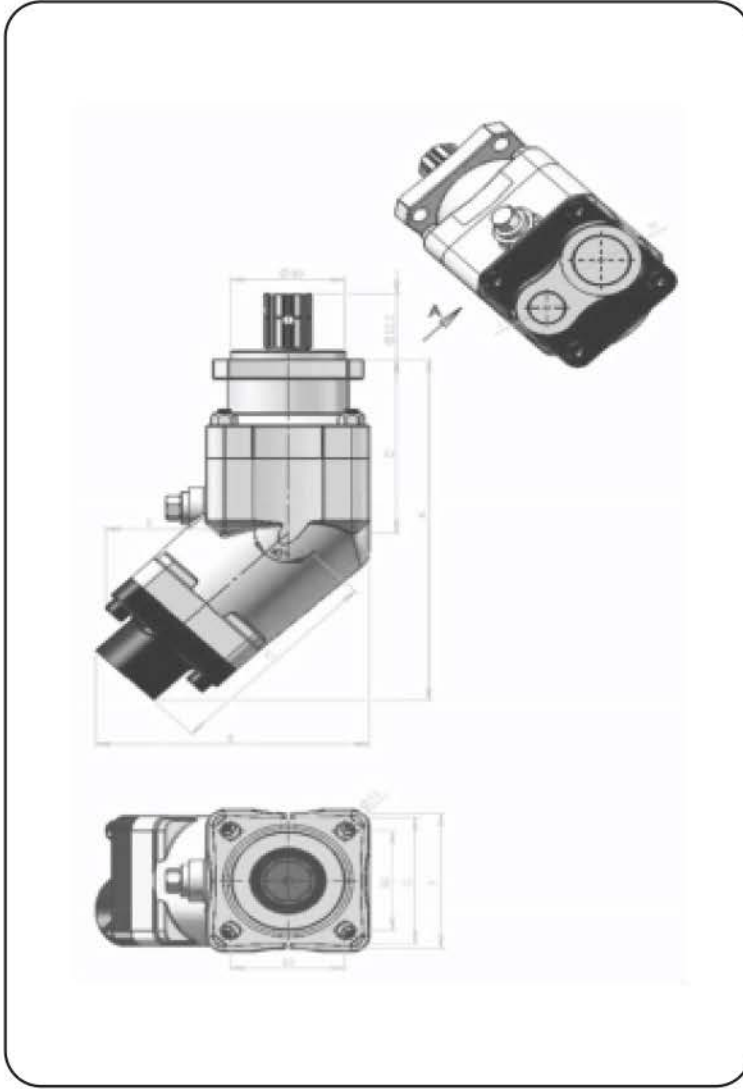


### 85 litre / 85 cc



Pompa Tipi Pump Type	Ürün Kodu Prod. Code		Akışkan Fluid
	CW	CCW	
85 litre / 85 cc	AT 085 EP/R	AT 085 EP/L	Hidrolik mineral yağ ve yanmaya dayanıklı akışkanlar.  Mineral oil based hydraulic fluids to ISO/DIN and fire resistant fluids.
A		297	
B		193	
C		163	
D		127	
E		131	
F		117	
G		100	
H		1 1/2"	
J		1"	

## 105cc BENT AXIS PISTON PUMP



### Kullanıldığı Alanlar / Use On

- Damperli Araçlar / Dump Trucks
- Çöp Araçları / Refuse Trucks
- Traktör Keççeleri / Tractor Ladles

### Bağlantılı Şekli / Mounting Type

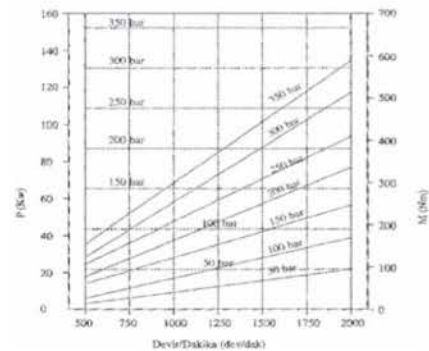
- Akuple Bağlantılı
- Coupled Mounting

### Dönüş Yönü / Rotation

- Sağ - Sol
- Right - Left

Pompa Tipi Pump Type	Ürün Kodu Prod. Code		Akışkan Fluid
	CW	CCW	
105 litre / 105 cc	AT 105 EP/R	AT 105 EP/L	Hidrolik mineral yağ ve yanmaya dayanıklı akışkanlar.  Mineral oil based hydraulic fluids to ISO/DIN and fire resistant fluids.
A	297		
B	193		
C	163		
D	127		
E	131		
F	117		
G	100		
H	1 1/2"		
J	1"		

105 litre / 105 cc



GEAR PUMPS



**30 SERIES GEAR PUMPS**  
**35 SERIES GEAR PUMPS**  
**40 SERIES GEAR PUMPS**



## 30 SERIES GEAR PUMPS ( UNI )



Ateş Teknik No	Max.Sürekli Basınç	Max.Kesikli Basınç	Max. Ani Basınç	Max.Sürekli Hız	Max.Kesikli Hız	Giriş	Çıkış	Ağırlık
	Max.Cont.Pressure	Max.Int.Pressure	Max. Peak Pressure	Max.Cont.Speed	Max.Int.Hız	Inlet	Outlet	Weight
Ateş Technic No	Bar-Psi	Bar-Psi	Bar-Psi	rpm	rpm	inch	inch	kg
AT 30-17 T1 UNI	290 4200	315 4560	325 4700	2100	2800	G 1/2"	G 1/2"	10
AT 30-27 T1 UNI	290 4200	315 4560	325 4700	2100	2800	G 3/4"	G 3/4"	10.5
AT 30-34 T1 UNI	280 4060	300 4350	310 4500	1800	2600	G 3/4"	G 3/4"	11
AT 30-43 T1 UNI	270 3900	290 4200	300 4350	1800	2300	G 1"	G 3/4"	11.5
AT 30-51 T1 UNI	240 3480	260 3770	280 4060	1800	2300	G 1"	G 1"	12
AT 30-61 T1 UNI	220 3190	240 3480	250 3625	1400	1800	G 1 1/4"	G 1"	12
AT 30-73 T1 UNI	220 3190	240 3480	250 3625	1400	1800	G 1 1/4"	G 1"	13
AT 30-82 T1 UNI	190 2750	210 3040	220 3190	1400	1600	G 1 1/4"	G 1"	13
AT 30-92 T1 UNI	190 2750	210 3040	220 3190	1400	1600	G 1 1/4"	G 1"	14

## 30 SERIES GEAR PUMPS ( ISO )



Ateş Teknik No	Max.Sürekli Basınç	Max.Kesikli Basınç	Max. Ani Basınç	Max.Sürekli Hız	Max.Kesikli Hız	Giriş	Çıkış	Ağırlık
	Max.Cont.Pressure	Max.Int.Pressure	Max. Peak Pressure	Max.Cont.Speed	Max.Int.Hız	Inlet	Outlet	Weight
Ateş Technic No	Bar-Psi	Bar-Psi	Bar-Psi	rpm	rpm	inch	inch	kg
AT 30-17 T1 ISO	290 4200	315 4560	325 4700	2100	2800	G 1/2"	G 1/2"	11.5
AT 30-27 T1 ISO	290 4200	315 4560	325 4700	2100	2800	G 3/4"	G 1/2"	12.5
AT 30-34 T1 ISO	280 4060	300 4350	310 4500	1800	2600	G 3/4"	G 3/4"	13
AT 30-43 T1 ISO	270 3900	290 4200	300 4350	1800	2300	G 1"	G 3/4"	13
AT 30-51 T1 ISO	240 3480	260 3770	280 4060	1800	2300	G 1"	G 3/4"	14
AT 30-61 T1 ISO	220 3190	240 3480	250 3625	1400	1800	G 1 1/4"	G 1"	14
AT 30-73 T1 ISO	220 3190	240 3480	250 3625	1400	1800	G 1 1/4"	G 1"	14.5
AT 30-82 T1 ISO	190 2750	210 3040	220 3190	1400	1600	G 1 1/4"	G 1"	14.5
AT 30-92 T1 ISO	190 2750	210 3040	220 3190	1400	1600	G 1 1/4"	G 1"	15.5

## 30 SERIES T2 GEAR PUMPS UNI



Ateş Teknik No	Max.Sürekli Basınç	Max.Kesikli Basınç	Max. Ani Basınç	Max.Sürekli Hız	Max.Kesikli Hız	Giriş	Çıkış	Ağırlık
Ateş Technic No	Max.Cont.Pressure	Max.Int.Pressure	Max. Peak Pressure	Max.Cont.Speed	Max.Int.Hız	Inlet	Outlet	Weight
Ateş Technic No	Bar-Psi	Bar-Psi	Bar-Psi	rpm	rpm	inch	inch	kg
AT 30-17 T2	290 4200	315 4560	325 4700	2100	2800	G 1/2"	G 1/2"	10
AT 30-27 T2	290 4200	315 4560	325 4700	2100	2800	G 3/4"	G 3/4"	11
AT 30-34 T2	280 4060	300 4350	310 4500	1800	2600	G 3/4"	G 3/4"	11
AT 30-43 T2	270 3900	290 4200	300 4350	1800	2300	G 1"	G 3/4"	12
AT 30-51 T2	240 3480	260 3770	280 4060	1800	2300	G 1"	G 1"	12.5
AT 30-61 T2	220 3190	240 3480	250 3625	1400	1800	G 1 1/4"	G 1"	13
AT 30-73 T2	220 3190	240 3480	250 3625	1400	1800	G 1 1/4"	G 1"	13.5
AT 30-82 T2	190 2750	210 3040	220 3190	1400	1600	G 1 1/4"	G 1"	13.5
AT 30-92 T2	190 2750	210 3040	220 3190	1400	1600	G 1 1/4"	G 1"	14



## 35 SERIES BI-DIRECTIONAL GEAR PUMPS UNI



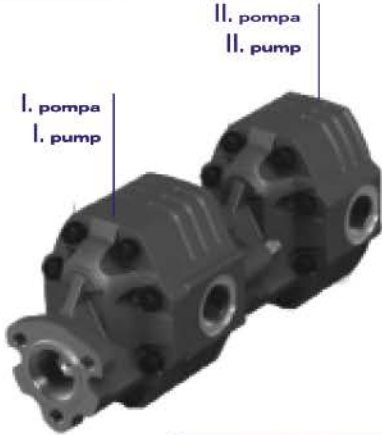
Ateş Teknik No	Max.Sürekli Basınç	Max.Kesikli Basınç	Max. Ani Basınç	Max.Sürekli Hız	Max.Kesikli Hız	Giriş	Çıkış	Ağırlık
Ateş Technic No	Max.Cont.Pressure	Max.Int.Pressure	Max. Peak Pressure	Max.Cont.Speed	Max.Int.Hız	Inlet	Outlet	Weight
Ateş Technic No	Bar-Psi	Bar-Psi	Bar-Psi	rpm	rpm	inch	inch	kg
AT 35-43 BD UNI	270 3900	290 4200	300 4350	1800	2300	G 1"	G 3/4"	12
AT 35-61 BD UNI	220 3190	240 3480	250 3625	1400	1800	G 1 1/4"	G 1"	13
AT 35-82 BD UNI	190 2750	210 3040	220 3190	1400	1600	G 1 1/4"	G 1"	14
AT 35-92 BD UNI	190 2750	210 3040	220 3190	1400	1600	G 1 1/4"	G 1"	15

## 35 SERIES BI-DIRECTIONAL GEAR PUMPS ISO



Ateş Teknik No	Max.Sürekli Basınç	Max.Kesikli Basınç	Max. Ani Basınç	Max.Sürekli Hız	Max.Kesikli Hız	Giriş	Çıkış	Ağırlık
	Max.Cont.Pressure	Max.Int.Pressure	Max. Peak Pressure	Max.Cont.Speed	Max.Int.Hız	Inlet	Outlet	Weight
Ateş Technic No	Bar-Psi	Bar-Psi	Bar-Psi	rpm	rpm	inch	inch	kg
AT 35-43 BD ISO	270 3900	290 4200	300 4350	1800	2300	G 1"	G 3/4"	14
AT 35-61 BD ISO	220 3190	240 3480	250 3625	1400	1800	G 1 1/4"	G 1"	15
AT 35-82 BD ISO	190 2750	210 3040	220 3190	1400	1600	G 1 1/4"	G 1"	16
AT 35-92 BD ISO	190 2750	210 3040	220 3190	1400	1600	G 1 1/4"	G 1"	17

## TANDEM GEAR PUMPS UNI



Ateş Teknik No	Max.Sürekli Basınç	Max.Kesikli Basınç	Max. Ani Basınç	Max.Sürekli Hız	Max.Kesikli Hız	Giriş	Çıkış	Ağırlık	
	Max.Cont.Pressure	Max.Int.Pressure	Max. Peak Pressure	Max.Cont.Speed	Max.Int.Hız	Inlet	Outlet	Weight	
Ateş Technic No	Bar-Psi	Bar-Psi	Bar-Psi	rpm	rpm	inch	inch	kg	
1.Pompa 1.Pump	TANDEM AT 43 <sub>cc</sub> UNI	270 3900	290 4200	300 4350	1800	2300	G 1"	G 3/4"	11.5
	TANDEM AT 73 <sub>cc</sub> UNI	220 3190	240 3480	250 3625	1400	1800	G 1 1/4"	G 1"	13.5
	TANDEM AT 109 <sub>cc</sub> UNI	240 3480	260 3770	280 4060	1700	2600	G 1 1/4"	G 1"	20

- 2.Pompanın litre seçimi müşteri tarafından tercih edilir.
- The second pump liter is chosen by customer.



## TANDEM GEAR PUMPS ISO



1.Pompa 1.Pump	Ateş Teknik No	Max.Sürekli Baskıç	Max.Kesikli Baskıç	Max. Ani Baskıç	Max.Sürekli Hız	Max.Kesikli Hız	Giriş	Çıkış	Ağırlık
		Max.Cont.Pressure	Max.Int.Pressure	Max. Peak Pressure	Max.Cont.Speed	Max.Int.Hız	Inlet	Outlet	Weight
	Ateş Technic No	Bar-Psi	Bar-Psi	Bar-Psi	rpm	rpm	inch	inch	kg
1.Pompa 1.Pump	TANDEM AT 43 <sub>cc</sub> ISO	270 3900	290 4200	300 4350	1800	2300	G 1"	G 3/4"	13
	TANDEM AT 73 <sub>cc</sub> ISO	220 3190	240 3480	250 3625	1400	1800	G 1 1/4"	G 1"	15
	TANDEM AT 109 <sub>cc</sub> ISO	240 3480	260 3770	280 4060	1700	2600	G 1 1/4"	G 1"	21.5

- 2.Pompanın litre seçimi müşteri tarafından tercih edilir.
- The second pump liter is chosen by customer.

## 30 SERIES GEAR PUMPS MECHANICAL WITH SHAFT



1.Pompa 1.Pump	Ateş Teknik No	Max.Sürekli Baskıç	Max.Kesikli Baskıç	Max. Ani Baskıç	Max.Sürekli Hız	Max.Kesikli Hız	Giriş	Çıkış	Ağırlık
		Max.Cont.Pressure	Max.Int.Pressure	Max. Peak Pressure	Max.Cont.Speed	Max.Int.Hız	Inlet	Outlet	Weight
	Ateş Technic No	Bar-Psi	Bar-Psi	Bar-Psi	rpm	rpm	inch	inch	kg
1.Pompa 1.Pump	AT 30-43	270 3900	290 4200	300 4350	1800	2300	G 1"	G 3/4"	16
	AT 30-61	220 3190	240 3480	250 3625	1400	1800	G 1 1/4"	G 1"	17
	AT 30-82	190 2750	210 3040	220 3190	1400	1600	G 1 1/4"	G 1"	18.5



## 30 SERIES GEAR PUMPS PNEUMATIC WITH SHAFT



Ateş Teknik No	Max.Sürekli Basınç	Max.Kesikli Basınç	Max. Ani Basınç	Max.Sürekli Hız	Max.Kesikli Hız	Giriş	Çıkış	Ağırlık
	Max.Cont.Pressure	Max.Int.Pressure	Max. Peak Pressure	Max.Cont.Speed	Max.Int.Hız	Inlet	Outlet	Weight
Ateş Technic No	Bar-Psi	Bar-Psi	Bar-Psi	rpm	rpm	inch	inch	kg
AT 30-43	270 3900	290 4200	300 4350	1800	2300	G 1"	G 3/4"	16.5
AT 30-61	220 3190	240 3480	250 3625	1400	1800	G 1 1/4"	G 1"	17
AT 30-82	190 2750	210 3040	220 3190	1400	1600	G 1 1/4"	G 1"	19

## 30 SERIES GEAR PUMPS MECHANICAL WITH SPLINED



Ateş Teknik No	Max.Sürekli Basınç	Max.Kesikli Basınç	Max. Ani Basınç	Max.Sürekli Hız	Max.Kesikli Hız	Giriş	Çıkış	Ağırlık
	Max.Cont.Pressure	Max.Int.Pressure	Max. Peak Pressure	Max.Cont.Speed	Max.Int.Hız	Inlet	Outlet	Weight
Ateş Technic No	Bar-Psi	Bar-Psi	Bar-Psi	rpm	rpm	inch	inch	kg
AT 30-43	270 3900	290 4200	300 4350	1800	2300	G 1"	G 3/4"	16
AT 30-61	220 3190	240 3480	250 3625	1400	1800	G 1 1/4"	G 1"	17
AT 30-82	190 2750	210 3040	220 3190	1400	1600	G 1 1/4"	G 1"	19

## 30 SERIES GEAR PUMPS PNEUMATIC WITH SPLINED



Ateş Teknik No	Max.Sürekli Basınç	Max.Kesikli Basınç	Max. Ani Basınç	Max.Sürekli Hız	Max.Kesikli Hız	Giriş	Çıkış	Ağırlık
Ateş Technic No	Max.Cont.Pressure	Max.Int.Pressure	Max. Peak Pressure	Max.Cont.Speed	Max.Int.Hız	Inlet	Outlet	Weight
Ateş Technic No	Bar-Psi	Bar-Psi	Bar-Psi	rpm	rpm	inch	inch	kg
AT 30-43	270 3900	290 4200	300 4350	1800	2300	G 1"	G 3/4	16.5
AT 30-61	220 3190	240 3480	250 3625	1400	1800	G 1 1/4"	G 1"	17
AT 30-82	190 2750	210 3040	220 3190	1400	1600	G 1 1/4"	G 1"	19

## 30 SERIES GEAR PUMPS MECHANICAL UNI



Ateş Teknik No	Max.Sürekli Basınç	Max.Kesikli Basınç	Max. Ani Basınç	Max.Sürekli Hız	Max.Kesikli Hız	Giriş	Çıkış	Ağırlık
Ateş Technic No	Max.Cont.Pressure	Max.Int.Pressure	Max. Peak Pressure	Max.Cont.Speed	Max.Int.Hız	Inlet	Outlet	Weight
Ateş Technic No	Bar-Psi	Bar-Psi	Bar-Psi	rpm	rpm	inch	inch	kg
AT 30-43 T1 UNI	270 3900	290 4200	300 4350	1800	2300	G 1"	G 3/4	15
AT 30-61 T1 UNI	220 3190	240 3480	250 3625	1400	1800	G 1 1/4"	G 1"	16
AT 30-82 T1 UNI	190 2750	210 3040	220 3190	1400	1600	G 1 1/4"	G 1"	17.5

## 30 SERIES GEAR PUMPS PNEUMATIC UNI



Ateş Teknik No	Max.Sürekli Basınc	Max.Kesikli Basınc	Max. Ani Basınc	Max.Sürekli Hız	Max.Kesikli Hız	Giriş	Çıkış	Ağırlık
	Max.Cont.Pressure	Max.Int.Pressure	Max. Peak Pressure	Max.Cont.Speed	Max.Int.Hız	Inlet	Outlet	Weight
Ateş Teknik No	Bar-Psi	Bar-Psi	Bar-Psi	rpm	rpm	inch	inch	kg
AT 30-43 T1 UNI	270 3900	290 4200	300 4350	1800	2300	G 1"	G 3/4"	15.5
AT 30-61 T1 UNI	220 3190	240 3480	250 3625	1400	1800	G 1 1/4"	G 1"	16
AT 30-82 T1 UNI	190 2750	210 3040	220 3190	1400	1600	G 1 1/4"	G 1"	17.5

## 30 SERIES T2 GEAR PUMPS MECHANICAL UNI



Ateş Teknik No	Max.Sürekli Basınc	Max.Kesikli Basınc	Max. Ani Basınc	Max.Sürekli Hız	Max.Kesikli Hız	Giriş	Çıkış	Ağırlık
	Max.Cont.Pressure	Max.Int.Pressure	Max. Peak Pressure	Max.Cont.Speed	Max.Int.Hız	Inlet	Outlet	Weight
Ateş Teknik No	Bar-Psi	Bar-Psi	Bar-Psi	rpm	rpm	inch	inch	kg
AT 30-43 T2	270 3900	290 4200	300 4350	1800	2300	G 1"	G 3/4"	15
AT 30-61 T2	220 3190	240 3480	250 3625	1400	1800	G 1 1/4"	G 1"	17
AT 30-82 T2	190 2750	210 3040	220 3190	1400	1600	G 1 1/4"	G 1"	18



## 30 SERIES T2 GEAR PUMPS PNEUMATIC UNI



T2



Ateş Teknik No	Max.Sürekli Basiç	Max.Kesikli Basiç	Max. Ani Basiç	Max.Sürekli Hiz	Max.Kesikli Hiz	Giriş	Çıkış	Ağırlık
	Max.Cont.Pressure	Max.Int.Pressure	Max. Peak Pressure	Max.Cont.Speed	Max.Int.Hiz	Inlet	Outlet	Weight
Ateş Technic No	Bar-Psi	Bar-Psi	Bar-Psi	rpm	rpm	inch	inch	kg
AT 30-43 T2	270 3900	290 4200	300 4350	1800	2300	G 1"	G 3/4	15.5
AT 30-61 T2	220 3190	240 3480	250 3625	1400	1800	G 1 1/4"	G 1"	16
AT 30-82 T2	190 2750	210 3040	220 3190	1400	1600	G 1 1/4"	G 1"	18

## 30 SERIES GEAR PUMPS MECHANICAL ISO



Ateş Teknik No	Max.Sürekli Basiç	Max.Kesikli Basiç	Max. Ani Basiç	Max.Sürekli Hiz	Max.Kesikli Hiz	Giriş	Çıkış	Ağırlık
	Max.Cont.Pressure	Max.Int.Pressure	Max. Peak Pressure	Max.Cont.Speed	Max.Int.Hiz	Inlet	Outlet	Weight
Ateş Technic No	Bar-Psi	Bar-Psi	Bar-Psi	rpm	rpm	inch	inch	kg
AT 30-43 ISO	270 3900	290 4200	300 4350	1800	2300	G 1"	G 3/4	17
AT 30-61 ISO	220 3190	240 3480	250 3625	1400	1800	G 1 1/4"	G 1"	18
AT 30-82 ISO	190 2750	210 3040	220 3190	1400	1600	G 1 1/4"	G 1"	19.5



## 30 SERIES GEAR PUMPS PNEUMATIC ISO



Ateş Teknik No	Max.Sürekli Basınç	Max.Kesikli Basınç	Max. Ani Basınç	Max.Sürekli Hiz	Max.Kesikli Hiz	Giriş	Çıkış	Ağırlık
	Max.Cont.Pressure	Max.Int.Pressure	Max. Peak Pressure	Max.Cont.Speed	Max.Int.Hız	Inlet	Outlet	Weight
Ateş Technic No	Bar-Psi	Bar-Psi	Bar-Psi	rpm	rpm	inch	inch	kg
AT 30-43 ISO	270 3900	290 4200	300 4350	1800	2300	G 1"	G 3/4"	17
AT 30-61 ISO	220 3190	240 3480	250 3625	1400	1800	G 1 1/4"	G 1"	18
AT 30-82 ISO	190 2750	210 3040	220 3190	1400	1600	G 1 1/4"	G 1"	19.5

## 40 SERIES GEAR PUMPS UNI



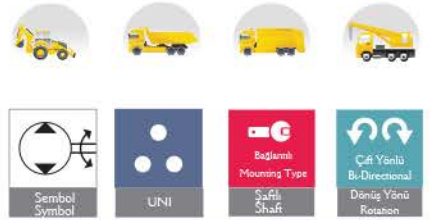
Ateş Teknik No	Max.Sürekli Basınç	Max.Kesikli Basınç	Max. Ani Basınç	Max.Sürekli Hiz	Max.Kesikli Hiz	Giriş	Çıkış	Ağırlık
	Max.Cont.Pressure	Max.Int.Pressure	Max. Peak Pressure	Max.Cont.Speed	Max.Int.Hız	Inlet	Outlet	Weight
Ateş Technic No	Bar-Psi	Bar-Psi	Bar-Psi	rpm	rpm	inch	inch	kg
AT 40-63 T1 UNI	290 4200	315 4560	325 4700	1700	2600	G 1"	G 3/4"	17
AT 40-73 T1 UNI	280 4060	300 4350	315 4560	1700	2600	G 1"	G 3/4"	18
AT 40-87 T1 UNI	260 3770	280 4060	290 4200	1700	2600	G 1 1/4"	G1"	19
AT 40-109 T1 UNI	240 3480	260 3770	280 4060	1700	2600	G 1 1/4"	G 1"	19.5
AT 40-133 T1 UNI	220 3190	250 3625	260 3770	1400	2600	G 1 1/2"	G 1"	20
AT 40-151 T1 UNI	120 2610	210 3050	220 3190	1400	2400	G 1 1/2"	G 1"	21

## 40 SERIES GEAR PUMPS ISO



Ateş Teknik No	Max.Sürekli Basınç	Max.Kesikli Basınç	Max. Ani Basınç	Max.Sürekli Hız	Max.Kesikli Hız	Giriş	Çıkış	Ağırlık
	Max.Cont.Pressure	Max.Int.Pressure	Max. Peak Pressure	Max.Cont.Speed	Max.Int.Hız	Inlet	Outlet	Weight
Ateş Technic No	Bar-Psi	Bar-Psi	Bar-Psi	rpm	rpm	inch	inch	kg
AT 40-63 ISO	290 4200	315 4560	325 4700	1700	2600	G 1"	G 3/4"	18.5
AT 40-73 ISO	280 4060	300 4350	315 4560	1700	2600	G 1"	G 3/4"	19.5
AT 40-87 ISO	260 3770	280 4060	290 4200	1700	2600	G 1 1/4"	G1"	20
AT 40-109 ISO	240 3480	260 3770	280 4060	1700	2600	G 1 1/4"	G 1"	21
AT 40-133 ISO	220 3190	250 3625	260 3770	1400	2600	G 1 1/2"	G 1"	22
AT 40-151 ISO	120 2610	210 3050	220 3190	1400	2400	G 1 1/2"	G 1"	22.5

## 40 SERIES BI-DIRECTIONAL GEAR PUMPS UNI



Ateş Teknik No	Max.Sürekli Basınç	Max.Kesikli Basınç	Max. Ani Basınç	Max.Sürekli Hız	Max.Kesikli Hız	Giriş	Çıkış	Ağırlık
	Max.Cont.Pressure	Max.Int.Pressure	Max. Peak Pressure	Max.Cont.Speed	Max.Int.Hız	Inlet	Outlet	Weight
Ateş Technic No	Bar-Psi	Bar-Psi	Bar-Psi	rpm	rpm	inch	inch	kg
AT 40-63 BD UNI	290 4200	315 4560	325 4700	1700	2600	G 1"	G 3/4"	18
AT 40-73 BD UNI	280 4060	300 4350	315 4560	1700	2600	G 1"	G 3/4"	19
AT 40-87 BD UNI	260 3770	280 4060	290 4200	1700	2600	G 1 1/4"	G1"	20
AT 40-109 BD UNI	240 3480	260 3770	280 4060	1700	2600	G 1 1/4"	G 1"	20.5
AT 40-133 BD UNI	220 3190	250 3625	260 3770	1400	2600	G 1 1/2"	G 1"	21
AT 40-151 BD UNI	120 2610	210 3050	220 3190	1400	2400	G 1 1/2"	G 1"	22

## 40 SERIES BI-DIRECTIONAL GEAR PUMPS ISO



Ateş Teknik No	Max.Sürekli Basınç	Max.Kesikli Basınç	Max. Ani Basınç	Max.Sürekli Hız	Max.Kesikli Hız	Giriş	Çıkış	Ağırlık
	Max.Cont.Pressure	Max.Int.Pressure	Max. Peak Pressure	Max.Cont.Speed	Max.Int.Hız	Inlet	Outlet	Weight
Ateş Technic No	Bar-Psi	Bar-Psi	Bar-Psi	rpm	rpm	inch	inch	kg
AT 40-63 BD ISO	290 4200	315 4560	325 4700	1700	2600	G 1"	G 3/4"	20
AT 40-73 BD ISO	280 4060	300 4350	315 4560	1700	2600	G 1"	G 3/4"	21
AT 40-87 BD ISO	260 3770	280 4060	290 4200	1700	2600	G 1 1/4"	G 1"	22
AT 40-109 BD ISO	240 3480	260 3770	280 4060	1700	2600	G 1 1/4"	G 1"	22.5
AT 40-133 BD ISO	220 3190	250 3625	260 3770	1400	2600	G 1 1/2"	G 1"	23
AT 40-151 BD ISO	120 2610	210 3050	220 3190	1400	2400	G 1 1/2"	G 1"	24

## 40 SERIES GEAR PUMPS MECHANICAL WITH SHAFT



Ateş Teknik No	Max.Sürekli Basınç	Max.Kesikli Basınç	Max. Ani Basınç	Max.Sürekli Hız	Max.Kesikli Hız	Giriş	Çıkış	Ağırlık
	Max.Cont.Pressure	Max.Int.Pressure	Max. Peak Pressure	Max.Cont.Speed	Max.Int.Hız	Inlet	Outlet	Weight
Ateş Technic No	Bar-Psi	Bar-Psi	Bar-Psi	rpm	rpm	inch	inch	kg
AT 40-109	240 3480	260 3770	280 4060	1700	2600	G 1 1/4"	G 1"	24

## 40 SERIES GEAR PUMPS PNEUMATIC WITH SHAFT



Ateş Teknik No	Max.Sürekli Basınç	Max.Kesikli Basınç	Max. Ani Basınç	Max.Sürekli Hız	Max.Kesikli Hız	Giriş	Çıkış	Ağırlık
	Max.Cont.Pressure	Max.Int.Pressure	Max. Peak Pressure	Max.Cont.Speed	Max.Int.Hız	Inlet	Outlet	Weight
Ateş Technic No	Bar-Psi	Bar-Psi	Bar-Psi	rpm	rpm	inch	inch	kg
AT 40-109	240 3480	260 3770	280 4060	1700	2600	G 1 1/4"	G 1"	24



## 40 SERIES GEAR PUMPS MECHANICAL WITH SPLINED



Ateş Teknik No	Max.Sürekli Basınç	Max.Kesikli Basınç	Max. Ani Basınç	Max.Sürekli Hız	Max.Kesikli Hız	Giriş	Çıkış	Ağırlık
Ateş Technic No	Max.Cont.Pressure	Max.Int.Pressure	Max. Peak Pressure	Max.Cont.Speed	Max.Int.Hız	Inlet	Outlet	Weight
	Bar-Psi	Bar-Psi	Bar-Psi	rpm	rpm	inch	inch	kg
40-109	240 3480	260 3770	280 4060	1700	2600	G 1 1/4"	G 1"	23.5

## 40 SERIES GEAR PUMPS PNEUMATIC WITH SPLINED



Ateş Teknik No	Max.Sürekli Basınç	Max.Kesikli Basınç	Max. Ani Basınç	Max.Sürekli Hız	Max.Kesikli Hız	Giriş	Çıkış	Ağırlık
Ateş Technic No	Max.Cont.Pressure	Max.Int.Pressure	Max. Peak Pressure	Max.Cont.Speed	Max.Int.Hız	Inlet	Outlet	Weight
	Bar-Psi	Bar-Psi	Bar-Psi	rpm	rpm	inch	inch	kg
40-109	240 3480	260 3770	280 4060	1700	2600	G 1 1/4"	G 1"	24



## 40 SERIES GEAR PUMPS MECHANICAL ISO



Ateş Teknik No	Max.Sürekli Basınç	Max.Kesikli Basınç	Max. Ani Basınç	Max.Sürekli Hız	Max.Kesikli Hız	Giriş	Çıkış	Ağırlık
Ateş Technic No	Max.Cont.Pressure	Max.Int.Pressure	Max. Peak Pressure	Max.Cont.Speed	Max.Int.Hız	Inlet	Outlet	Weight
Ateş Technic No	Bar-Psi	Bar-Psi	Bar-Psi	rpm	rpm	inch	inch	kg
AT 40-63 ISO	290 4200	315 4560	325 4700	1700	2600	G 1"	G 3/4"	23
AT 40-73 ISO	280 4060	300 4350	315 4560	1700	2600	G 1"	G 3/4"	23,5
AT 40-87 ISO	260 3770	280 4060	290 4200	1700	2600	G 1 1/4"	G1"	23,5
AT 40-109 ISO	240 3480	260 3770	280 4060	1700	2600	G 1 1/4"	G 1"	24,5
AT 40-133 ISO	220 3190	250 3625	260 3770	1400	2600	G 1 1/2"	G 1"	25,5
AT 40-151 ISO	120 2610	210 3050	220 3190	1400	2400	G 1 1/2"	G 1"	26

## 40 SERIES GEAR PUMPS PNEUMATIC ISO

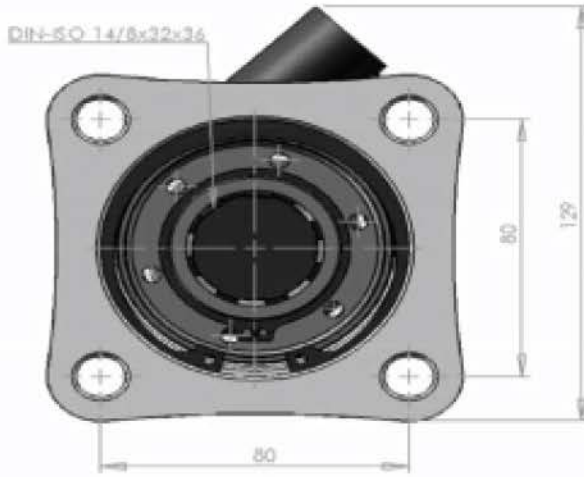


Ateş Teknik No	Max.Sürekli Basınç	Max.Kesikli Basınç	Max. Ani Basınç	Max.Sürekli Hız	Max.Kesikli Hız	Giriş	Çıkış	Ağırlık
Ateş Technic No	Max.Cont.Pressure	Max.Int.Pressure	Max. Peak Pressure	Max.Cont.Speed	Max.Int.Hız	Inlet	Outlet	Weight
Ateş Technic No	Bar-Psi	Bar-Psi	Bar-Psi	rpm	rpm	inch	inch	kg
AT 40-63 ISO	290 4200	315 4560	325 4700	1700	2600	G 1"	G 3/4"	23,5
AT 40-73 ISO	280 4060	300 4350	315 4560	1700	2600	G 1"	G 3/4"	24
AT 40-87 ISO	260 3770	280 4060	290 4200	1700	2600	G 1 1/4"	G1"	24
AT 40-109 ISO	240 3480	260 3770	280 4060	1700	2600	G 1 1/4"	G 1"	25
AT 40-133 ISO	220 3190	250 3625	260 3770	1400	2600	G 1 1/2"	G 1"	26
AT 40-151 ISO	120 2610	210 3050	220 3190	1400	2400	G 1 1/2"	G 1"	26,5

## PTO ( POWER TAKE OFF )



## PTO ( POWER TAKE OFF ) ZF ( ALIMINIUM BODY )



### Bağlantı Şekli / Mounting Type

- Kuyruktan
- Rear Mounting

### Kumanda Tipi / Control Type

- Pnömatik
- Pneumatic

### Dönüş Yönü / Rotation

- Sağ
- Clockwise
- (cw)

PTO Tipi PTO Type	Şanzıman Tipi Gearbox Type	Ürün Kodu Product Kode	Çıkış Tork Output Torque Nm	Tork kgm	Güç Power Kw	Çıkış Devri Output Speed (1000 rpm)	Ağırlık Weight kg
ZF	35, 36, 42, 50, 65, 66, 70, 75, 80, 90, 92 110, 111, 120, 150	AT 3114 (Short Sleeve) AT 4114 (Long Sleeve)	479,7	48,9	25,7	513	6

## PTO ( POWER TAKE OFF ) ZF



### Bağlantı Şekli / Mounting Type

- Kuyruktan
- Rear Mounting

### Kumanda Tipi / Control Type

- Pnömatik
- Pneumatic

### Dönüş Yönü / Rotation

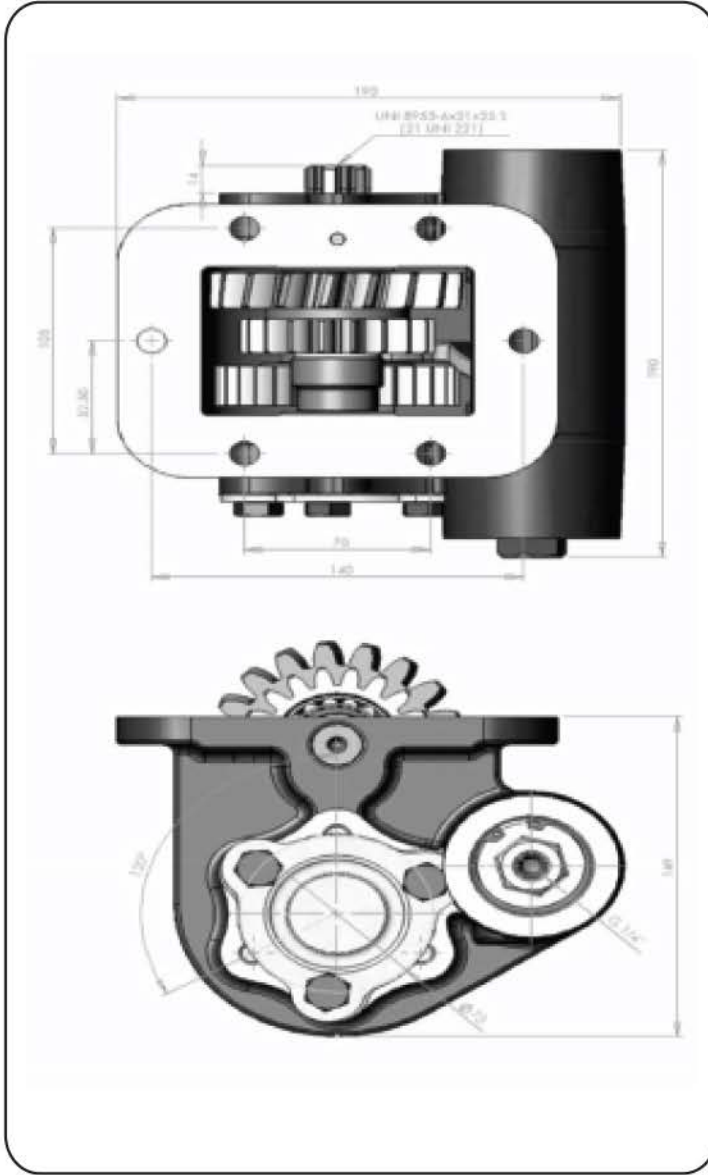
- Sol
- Counterclockwise
- (ccw)



PTO Tipi PTO Type	Şanzıman Tipi Gearbox Type	Ürün Kodu Product Kode	Çıkış Tork Output Torque Nm	Güç Power Kw	Çıkış Devri Output Speed (1000 rpm)	Ağırlık Weight kg	
ZF	35, 36, 42, 50, 65, 66, 70, 75, 80, 90, 92 110, 111, 120, 150	AT ZF 5T1 AT ZF 5 ISO	260	26,5	18,3	675	14



## PTO ( POWER TAKE OFF ) ZF



### Kullanıldığı Alanlar / Used Vehicies

- 18,220-19,270-26,230-26,270 MAN / 1827
- 2527- 2626 FORD CARGO / 75,270 DAF / S 18-S 21-S 24
- S 28-S 29-S 31 STEYR / BMC 270 / 75,300 DAF

### Bağlantılı Şekli / Mouting Type

- Sol Yan
- Left Side Mounting

### Kumanda Tipi / Control Type

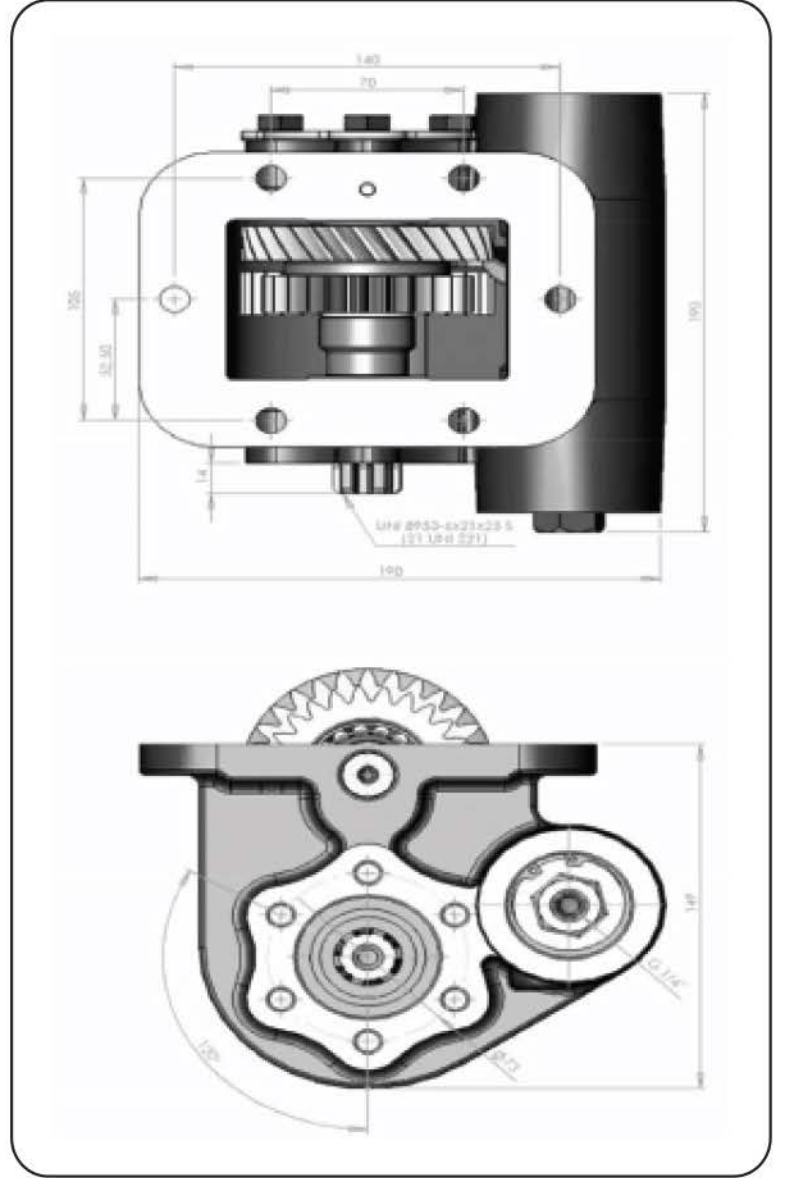
- Pnomatik
- Pneumatic

### Dönüş Yönü / Rotation

- Sol
- Countclockwise
- (ccw)

PTO Tipi PTO Type	Şanzıman Tipi Gearbox Type	Ürün Kodu Product Code	Çıkış Tork Output Torque Nm	Çıkış Tork Output Torque kgm	Güç Power Kw	Çıkış Devri Output Speed (1000 rpm)	Ağırlık Weight kg
ZF	9 S 109 (12,92)	AT ZF 3	191	19,5	13,5	675	13

## PTO ( POWER TAKE OFF ) ZF



### Kullanıldığı Alanlar / Used Vehicies

- 8,150-8,153-10,153-10263-10,185 Man
- MB 800 - 1215 - 1517 - Atego Mercedes / 45 LF
- 170 Daf/45,120-45130-45,150-45,160-130 Leyland Daf
- Renoult S 120,07 - S 120,08-135-370 Midlum-302-304
- 306-313-317 Leyland

### Bağlantılı Şekli / Mouting Type

- Sağ Yan
- Right Side Mounting

### Kumanda Tipi / Control Type

- Pnomatik
- Pneumatic

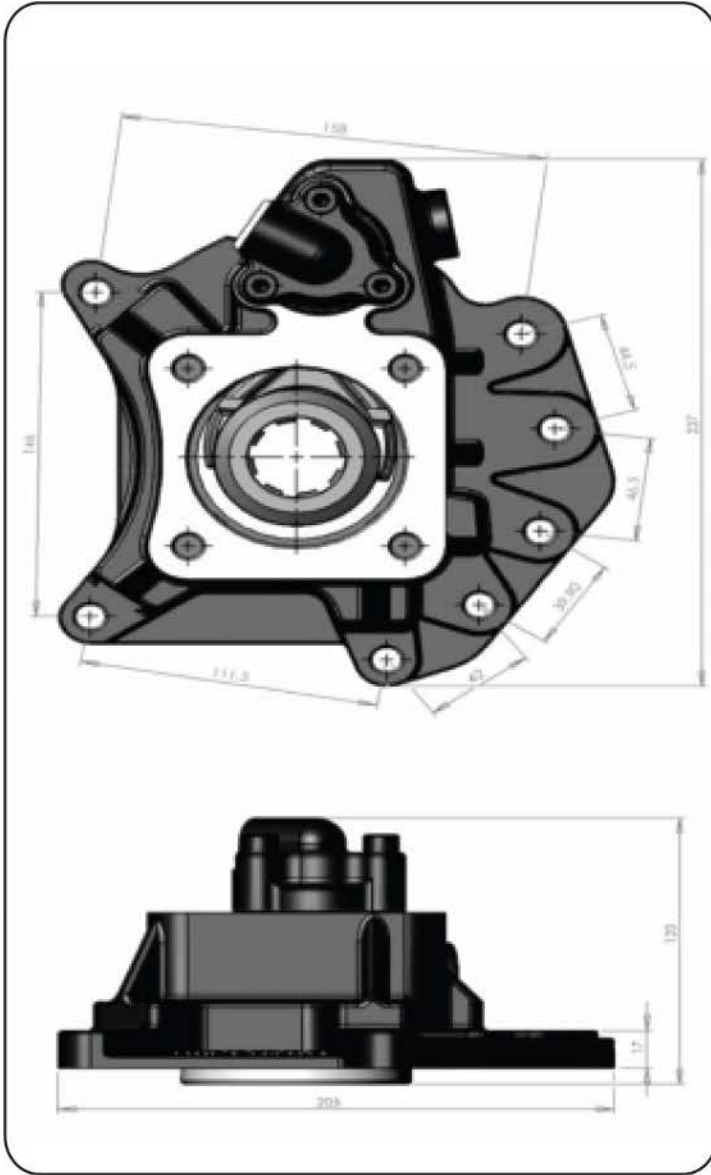
### Dönüş Yönü / Rotation

- Sağ
- Clockwise
- (cw)

PTO Tipi PTO Type	Şanzıman Tipi Gearbox Type	Ürün Kodu Product Code	Çıkış Tork Output Torque Nm	kgm	Güç Power Kw	Çıkış Devri Output Speed (1000 rpm)	Ağırlık Weight kg
ZF	S 5 42	AT ZF 4	145,2	14,8	12,2	650	13

## PTO ( POWER TAKE OFF )

## MERCEDES



## Kullanıldığı Alanlar / Used Vehicles

- 1729-1735-1827-1834-1838-1929-1935-2038
- 2429-2435-2527-2531-2534-2629-2631-2635
- 2638-6559-3234-3534-3535-1831-1835-1840
- 1844-1848-1850-1857-1934-1938-1953-2044
- 2050-2544-2550-2650-2643-2644-3031-3234
- 3331-3348-4148-3335-3336-3340-2031-2040
- 2648-3548-3553-3557-3538

ACTROSS MERCEDES

## Bağlantılı Şekli / Mounting Type

- Kuyruktan
- Rear Mounting

## Kumanda Tipi / Control Type

- Pnömatik
- Pneumatic

## Dönüş Yönü / Rotation

- Sağ
- Clockwise
- (cw)

PTO Tipi PTO Type	Şanzıman Tipi Gearbox Type	Ürün Kodu Product Code	Çıkış Tork Output Torque Nm	Tork kgm	Güç Power Kw	Çıkış Devri Output Speed (1000 rpm)	Ağırlık Weight kg
MERCEDES AXOR	G131-9/16,02 G210,211 240,260-16/1703 G221-9/16,02	AT MB 2	230,5	23,5	12	675	13



## MERCEDES

## PTO ( POWER TAKE OFF )



## Kullanıldığı Alanlar / Used Vehicies

- 1729-1735-1827-1834-1838-1929-1935-2038
- 2429-2435-2527-2531-2534-2629-2631-2635
- 2638-6559-3234-3534-3535-1831-1835-1840
- 1844-1848-1850-1857-1934-1938-1953-2044
- 2050-2544-2550-2650-2643-2644-3031-3234
- 3331-3348-4148-3335-3336-3340-2031-2040
- 2648-3548-3553-3557-3538

ACTROSS MERCEDES

## Bağlantılı Şekli / Mouting Type

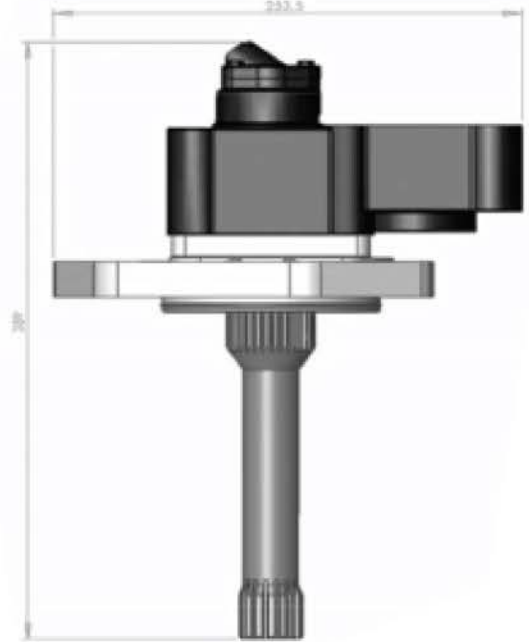
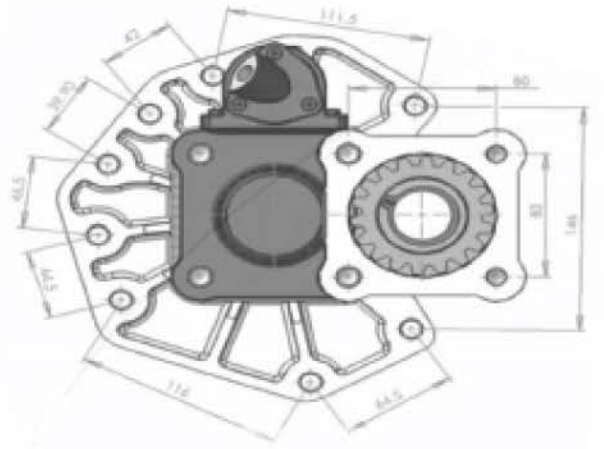
- Kuyruktan
- Rear Mounting

## Kumanda Tipi / Control Type

- Pnomatik
- Pneumatic

## Dönüş Yönü / Rotation

- Sağ
- Clockwise
- (cw)



PTO Tipi PTO Type	Şanzıman Tipi Gearbox Type	Ürün Kodu Product Code	Çıkış Tork Output Torque Nm kgm		Güç Power Kw	Çıkış Devri Output Speed (1000 rpm)	Ağırlık Weight kg
MERCEDES AXOR	G131-9/16,02 G210,211 240,260-16/1703 G221-9/16,02	AT MB 1	230,5	23,5	12	500	7,5



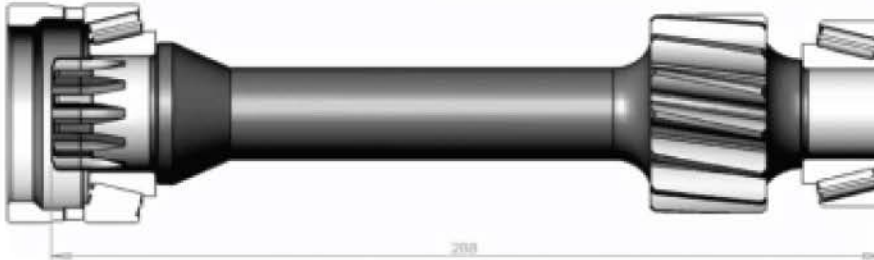


## CARDAN SHAFT

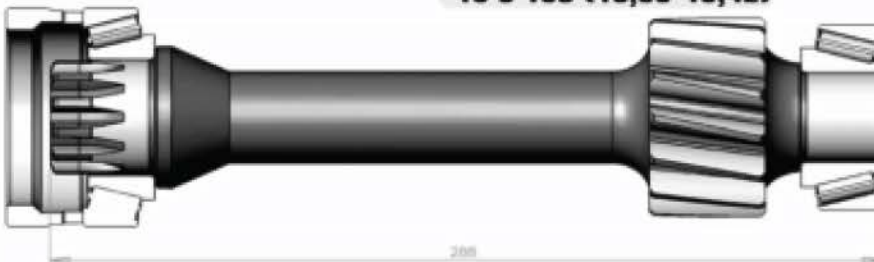
9 S 75 (13,16)

Kullanıldığı Araçlar  
Used Vehicles

2521-2524-3224 Mercedes  
617-620-622-822 BMC Pro  
1824-2524-2524 D  
Ford Cargo / 19,260-26,260  
26,265-32,260 Fargo  
55,150-55,180-55,210  
55,230 DAF  
823-923 Mercedes

9 S 109 (12,91)  
16 S 109 (13,31-13,41-13,43)Kullanıldığı Araçlar  
Used Vehicles

32,270 Man  
827-832 BMC Pro  
270-26 Fatih  
3226-3227C-3227S-2527  
Ford Cargo  
1830-2530-3230C-3240  
4030-4050 Ford Cargo  
270-280 BMC  
19,360 Man

9 S 109 (12,92)  
8 S 109 (11,35)  
16 S 109 (13,30-13,42)Kullanıldığı Araçlar  
Used Vehicles

18,220-19,270-25,270  
26,230-26,270 Man  
1827-2527-2626 Ford Cargo  
75,270 DAF / S 18-S 21-S24  
S 29-S 31 STEYR  
270 BMC / 75,300 DAF



## CARDAN SHAFT

**16 S 109 (13,53-11,86)**  
**8 S 109 (13,53)**  
**9 S 109 (10,24-10,25)**



**Kullanıldığı Araçlar**  
**Used Vehicles**

17,232-19,230-19,340  
 26,342 MAN  
 3226-2530 Ford Cargo  
 320,32-370 Renault Premium  
 AS 19,300-36,300-32,300  
 38,300 Hi-Ex Fargo Askam  
 FTR 800-FVR 900-FTM 1200  
 FVZ 1700 ISUZU  
 75,330 DAF

**16 S 130 (14,29-17,28-17,06-13,80)**  
**16 S 160 (14,29-17,28-17,06-13,80)**



**Kullanıldığı Araçlar**  
**Used Vehicles**

16,281-19,280-19,422  
 25,372-26,281-26,231  
 32,281-32,365-33,281  
 19,422 ( Silent) MAN  
 1935-2228-2433-2624  
 2628-2633-3828-4028  
 Mercedes  
 33,300-95,330-95,400 DAF

**16 S 151-16 S 221-16 S 251**



**Kullanıldığı Araçlar**  
**Used Vehicles**

MAN / MERCEDES / BMC PRO  
 FORD CARGO / CHRYSLER HINO  
 FARGO / IVECO / DAF / DAEWOO  
 RENAULT



## CARDAN SHAFT



**Mercedes Actros  
(G 125-135-155-180-200  
210-221-240-255-260)**

251,5  
SHORT

**Kullanıldığı Araçlar  
Used Vehicles**

1729-1735-1827-1834  
1838-1829-1935-2038  
2429-2435-2527-2531  
2534-2629-2631-2635  
2638-3229-3234-3534  
3535-1931-1835-1840  
1844-1848-1850-1857  
1934-1938-1953-2044  
2050-2544-2550-2650  
2643-2644-3031-3234  
3331-3348-4148-3335  
3336-3340-3235-2031  
2040-2684-3548-3553  
3557-3538 Actros Mercedes



**Mercedes Actros  
(G 125-135-155-180-200  
210-221-240-255-260)**

275  
LONG

**Kullanıldığı Araçlar  
Used Vehicles**

1729-1735-1827-1834  
1838-1829-1935-2038  
2429-2435-2527-2531  
2534-2629-2631-2635  
2638-3229-3234-3534  
3535-1931-1835-1840  
1844-1848-1850-1857  
1934-1938-1953-2044  
2050-2544-2550-2650  
2643-2644-3031-3234  
3331-3348-4148-3335  
3336-3340-3235-2031  
2040-2684-3548-3553  
3557-3538 Actros Mercedes

VALVES

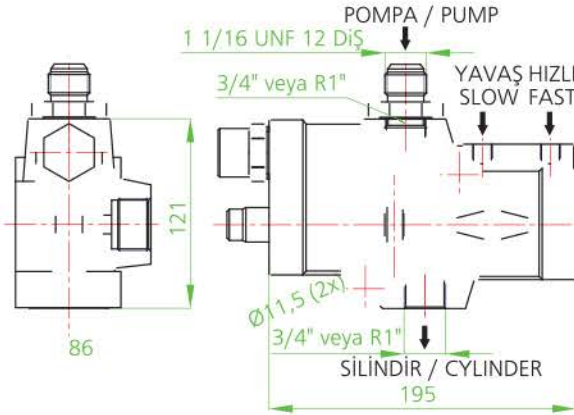




## YÖN VENTİLİ / DIRECTIONAL VALVE



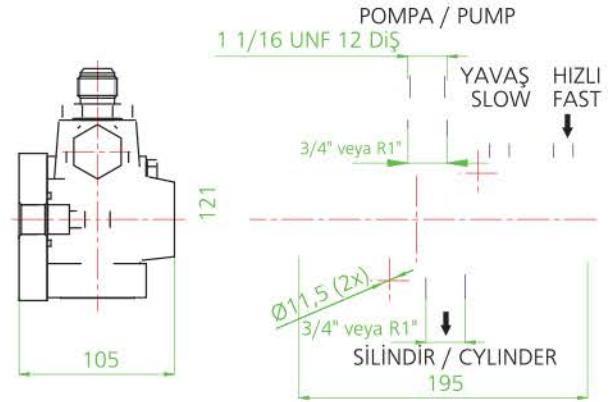
AT 80 DV - 3/4"



## TANK YÖN VENTİLİ / TANK DIRECTIONAL VALVE



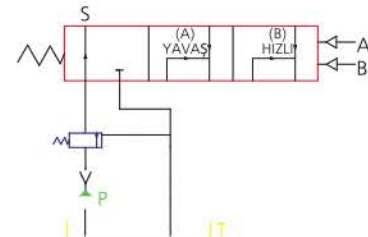
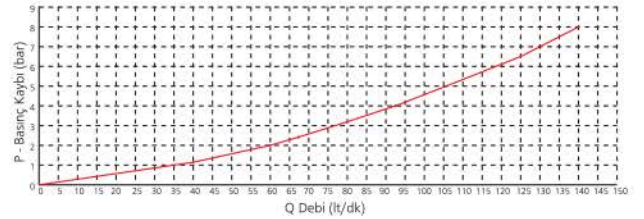
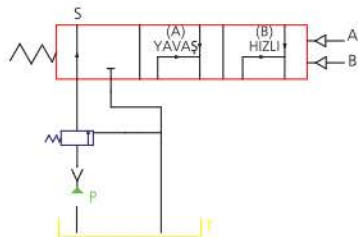
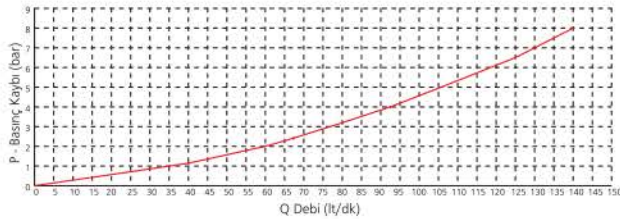
AT 80 TDV



VENTİL KODU VALVE CODES	3/4"Rakorlu 3/4" Fitting 36001010	1"Düz Rakorlu 1" Straight Fitt. 36001011	1"Ters Rakorlu 1" Reverse Fitt. 36001012
Debi Hızı - Flow Rate	110 lt/dk	140 lt/dk	140 lt/dk
Max.Basınç Max.Press	190 bar	190 bar	190 bar
Çal.Basınç Working Press.	170 bar	170 bar	170 bar
Ağırlık - Weight (kg)	6,00	5,80	6,10
Max. Pnömatik Basınç Max. Pneumatic Press.	12 bar	12 bar	12 bar

Akışkan  
FluidMineral bazlı hidrolik yağ  
Mineral based hydraulic oils

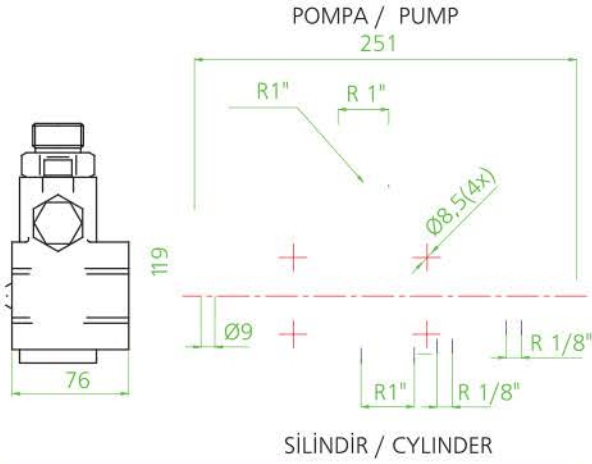
VENTİL KODU VALVE CODES	3/4"Rakorlu 3/4" Fitting 36001020	1"Düz Rakorlu 1" Straight Fitt. 36001022	1"Ters Rakorlu 1" Reverse Fitt. 36001023
Debi Hızı - Flow Rate	110 lt/dk	140 lt/dk	140 lt/dk
Max.Basınç Max.Press	190 bar	190 bar	190 bar
Çal.Basınç Working Press.	170 bar	170 bar	170 bar
Ağırlık - Weight (kg)	6,10	7,30	-----
Max. Pnömatik Basınç Max. Pneumatic Press.	12 bar	12 bar	12 bar

Akışkan  
FluidMineral bazlı hidrolik yağ  
Mineral based hydraulic oils

## AÇIK DEVRE YÖN VENTİLİ-4B OPEN LOOP DIRECTIONAL VALVE-4B



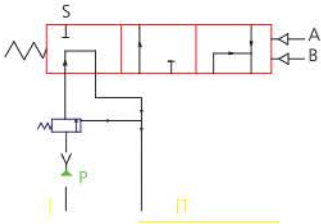
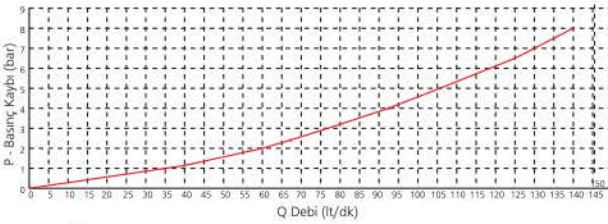
AT 80 OLV - 4B



VENTİL KODU VALVE CODES	1"Rakorlu 1" Fittings 36001030	1"Tank Tipi 1"Tank Type 36001031
Debi Hızı - Flow Rate	140 lt/dk	140 lt/dk
Max.Basınç - Max.Press	190 bar	190 bar
Çal.Basıncı Working Press.	170 bar	170 bar
Ağırlık - Weight (kg)	5,40	5,40
Max. Pnömatik Basınç Max. Pneumatic Press.	12 bar	12 bar

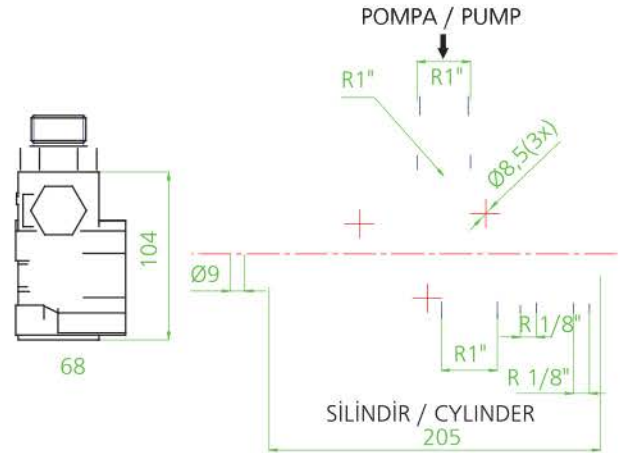
Akışkan  
Fluid

Mineral bazlı hidrolik yağ  
Mineral based hydraulic oils



## AÇIK DEVRE YÖN VENTİLİ-3B OPEN LOOP DIRECTIONAL VALVE-3B

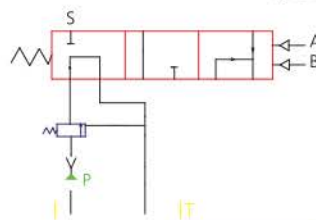
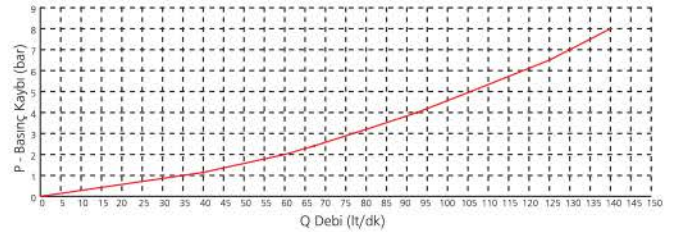
AT 80 OLV - 3B



VENTİL KODU VALVE CODES	1"Rakorlu 1" Fittings 36001060
Debi Hızı - Flow Rate	140 lt/dk
Max.Basınç - Max.Press	190 bar
Çal.Basıncı Working Press.	170 bar
Ağırlık - Weight (kg)	4,20
Max. Pnömatik Basınç Max. Pneumatic Press.	12 bar

Akışkan  
Fluid

Mineral bazlı hidrolik yağ  
Mineral based hydraulic oils

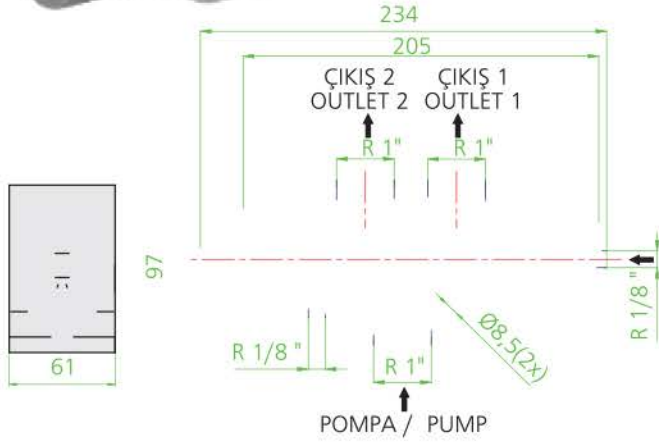


## RÖMÖRK YÖN VENTİLİ

TRAILER DIRECTIONAL VALVE



AT 80 TRDV

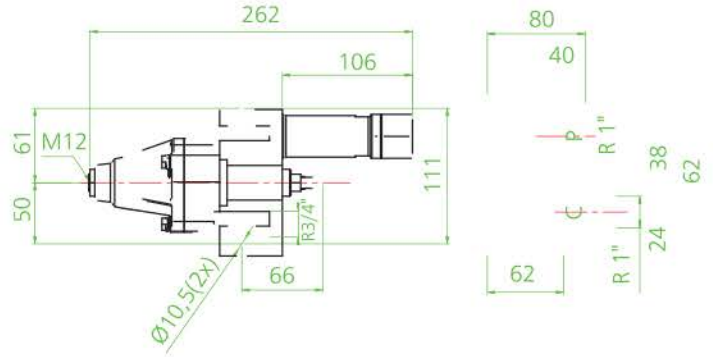


## TEK KONTROLLÜ YÖN VENTİLİ

SINGLE CONTROLLED VALVE

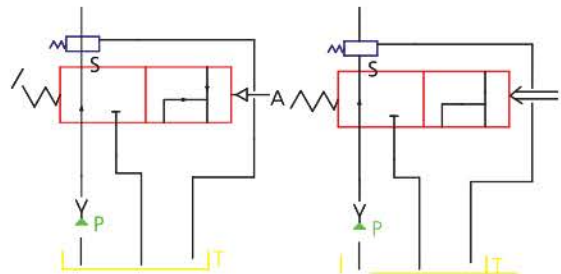
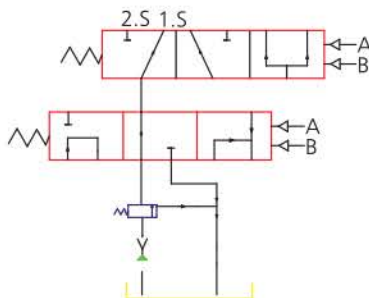
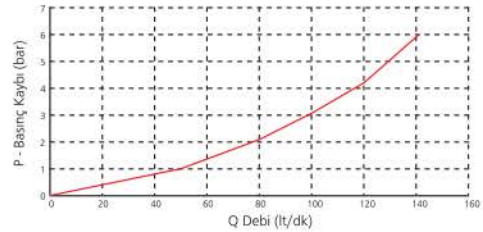
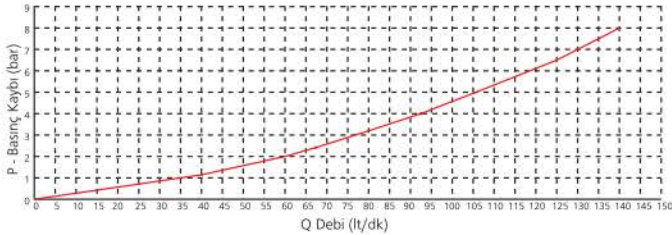


AT 80 SCV



VENTİL KODU VALVE CODES	1"Rakorlu 1" Fittings 36001040
Debi Hızı - Flow Rate	140 lt/dk
Max.Basınç - Max.Press	190 bar
Ağırlık - Weight (kg)	5,10
Max. Pnömatik Basınç Max. Pneumatic Press.	12 bar
Akışkan Fluid	Mineral bazlı hidrolik yağ Mineral based hydraulic oils

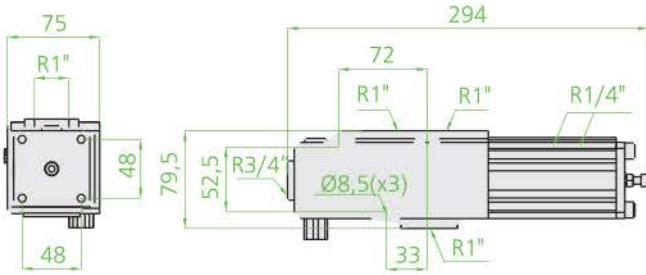
VENTİL KODU VALVE CODES	1"Rakorlu 1" Fittings 36001070
Debi Hızı - Flow Rate	140 lt/dk
Max.Basınç - Max.Press	190 bar
Çal.Basınç Working Press.	170 bar
Ağırlık - Weight (kg)	4,30
Max. Pnömatik Basınç Max. Pneumatic Press.	12 bar
Akışkan Fluid	Mineral bazlı hidrolik yağ Mineral based hydraulic oils



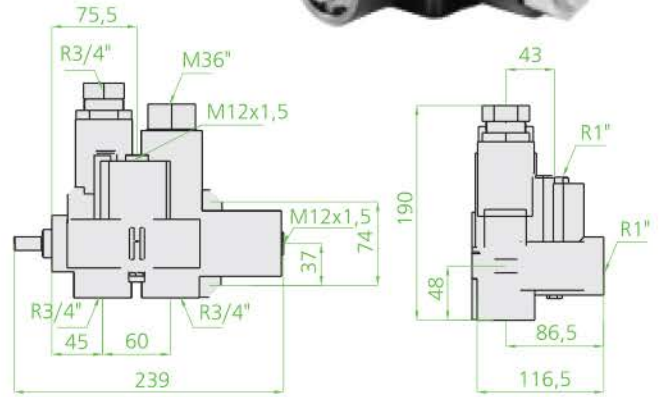


**3B 180 LT. YÖN VENTİLİ**  
 3B 180 LT. DIRECTIONAL VALVE

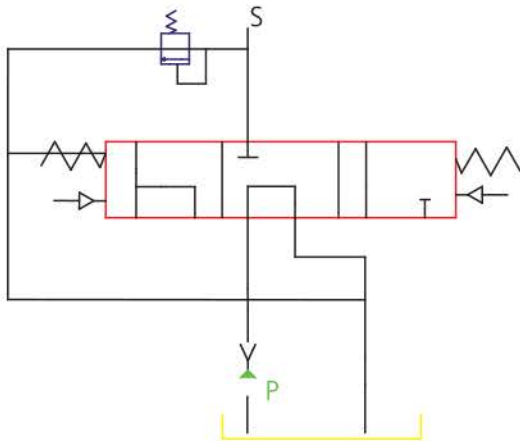

AT 80 HV


**BASINÇ KONTROLLÜ RÖMORK VENTİLİ**  
 TRAILER PRESSURE CONTROLLED VALVES

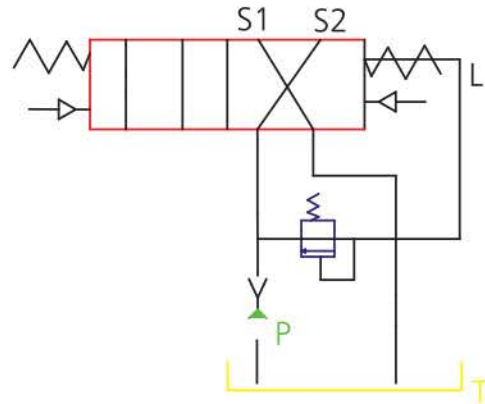
AT 80 PCV



VENTİL KODU VALVE CODES	1"Rakorlu 1"Fittings 36001090
Debi Hızı - Flow Rate	180 lt/dk
Max.Basınç - Max.Press	190 bar
Çal.Basıncı Working Press.	170 bar
Ağırlık - Weight (kg)	6
Max. Pnömatik Basınç Max. Pneumatic Press.	12 bar

Akışkan  
FluidMineral bazlı hidrolik yağ  
Mineral based hydraulic oils

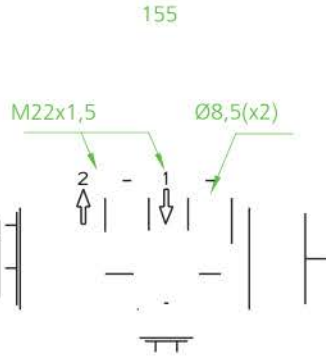
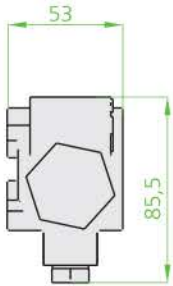
VENTİL KODU VALVE CODES	1"Rakorlu 1"Fittings 36001080
Debi Hızı - Flow Rate	180 lt/dk
Max.Basınç - Max.Press	190 bar
Çal.Basıncı Working Press.	170 bar
Ağırlık - Weight (kg)	8,30
Max. Pnömatik Basınç Max. Pneumatic Press.	12 bar

Akışkan  
FluidMineral bazlı hidrolik yağ  
Mineral based hydraulic oils

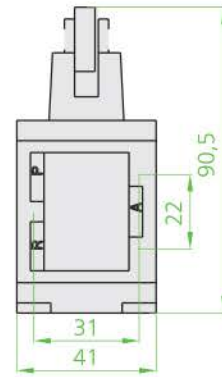


**MEKANİK DAMPER VENTİLLİ**  
 MECHANICAL DAMPER VALVE

AT 80 WDY


**SINIR KONTROL PNÖMATİK**  
 ULTIMATION VALVE PNEUMATIC

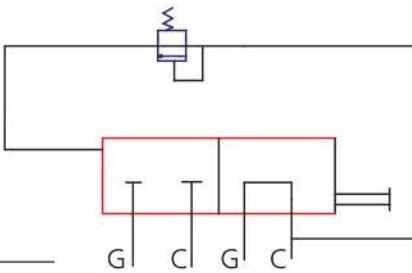
AT 80 UVP



28

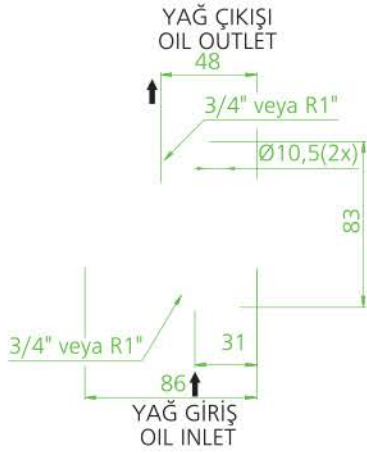
VENTİL KODU VALVE CODES	36001055
Debi Hızı - Flow Rate	110 lt/dk
Max.Basınç - Max.Press	190 bar
Ağırlık - Weight (kg)	2,20
Max. Pnömatik Basınç Max. Pneumatic Press.	12 bar
Akışkan Fluid	Mineral bazlı hidrolik yağ Mineral based hydraulic oils

VENTİL KODU VALVE CODES	36001531
Debi Hızı - Flow Rate	110 lt/dk
Max.Basınç - Max.Press	190 bar
Ağırlık - Weight (kg)	-----
Akışkan Fluid	Mineral bazlı hidrolik yağ Mineral based hydraulic oils

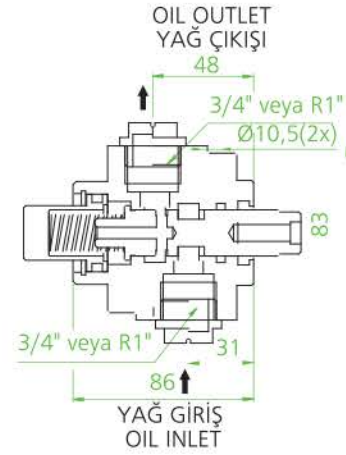


**AÇIK DEVRE SINIR KONTROL VENTİLİ**  
 OPEN LOOP

AT 80 OCV

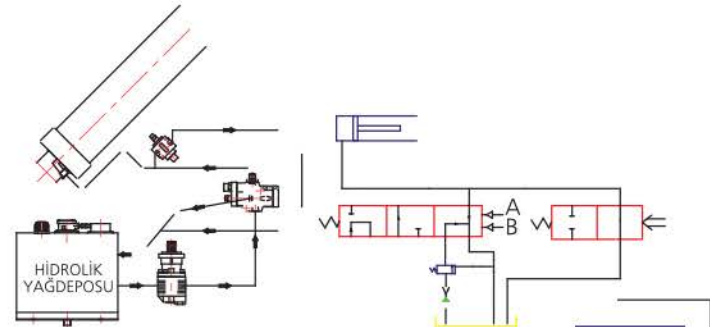
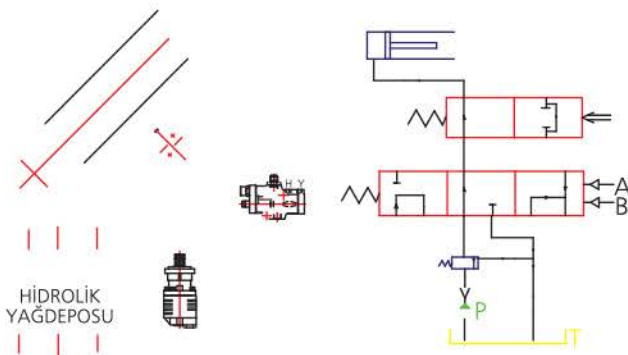

**KAPALI DEVRE SINIR KONTROL VENTİLİ**  
 CLOSED LOOP

AT 80 OCV



VENTİL KODU VALVE CODES	3/4"Rakorlu 3/4" Fittings 36001520	1"Tank Tipi 1"Tank Type 36001521
Debi Hızı - Flow Rate	110 lt/dk	140 lt/dk
Max.Basınç - Max.Press	190 bar	190 bar
Ağırlık - Weight (kg)	1,90	1,90
Akışkan Fluid	Mineral bazlı hidrolik yağ Mineral based hydraulic oils	

VENTİL KODU VALVE CODES	3/4"Rakorlu 3/4" Fittings 36001510	1"Tank Tipi 1"Tank Type 36001511
Debi Hızı - Flow Rate	110 lt/dk	140 lt/dk
Max.Basınç - Max.Press	190 bar	190 bar
Ağırlık - Weight (kg)	1,90	1,90
Akışkan Fluid	Mineral bazlı hidrolik yağ Mineral based hydraulic oils	





## ADAPTORS



UNIVERSAL  
ADOPTOR



ADOPTOR



ISO ADOPTOR



UNI ADOPTOR



COUPLING



FLANGE

# MOUNTING EQUIPMENTS



JOYSTICK



2 WAY AIR SWITCH



3 WAY AIR SWITCH



4 WAY AIR SWITCH



AIR HOSE



A I R F I T T I N G S



PNOMATIC  
UMITATION  
VALVE



QUICK COUPLINGS



OIL TANK FILTERS



FILLER CUP



OIL  
INDICATOR



OIL TANK REAR CUB



OIL TANK SIDE MOUNTED



FITTINGS



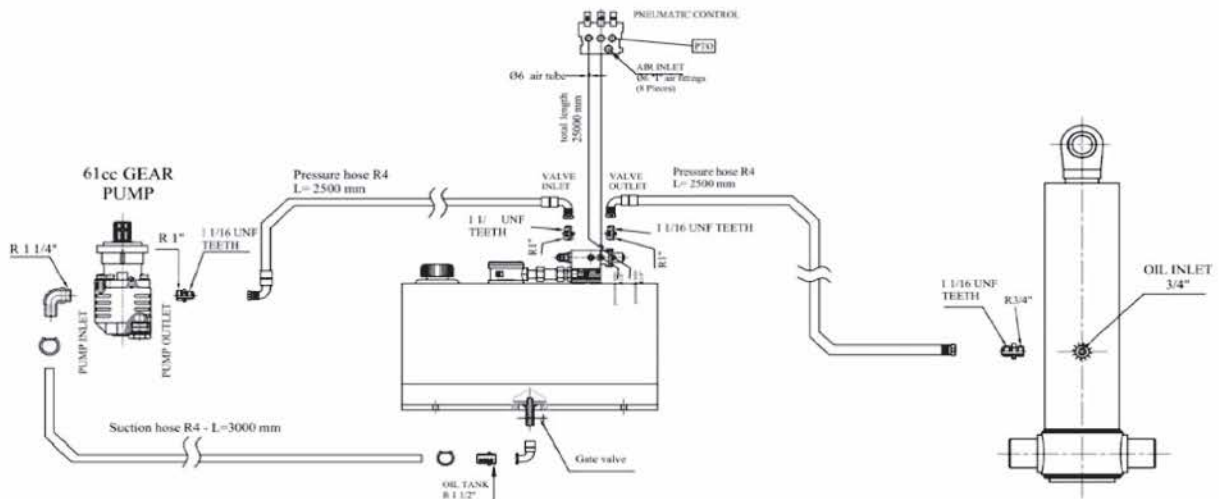


GRANTRUCK

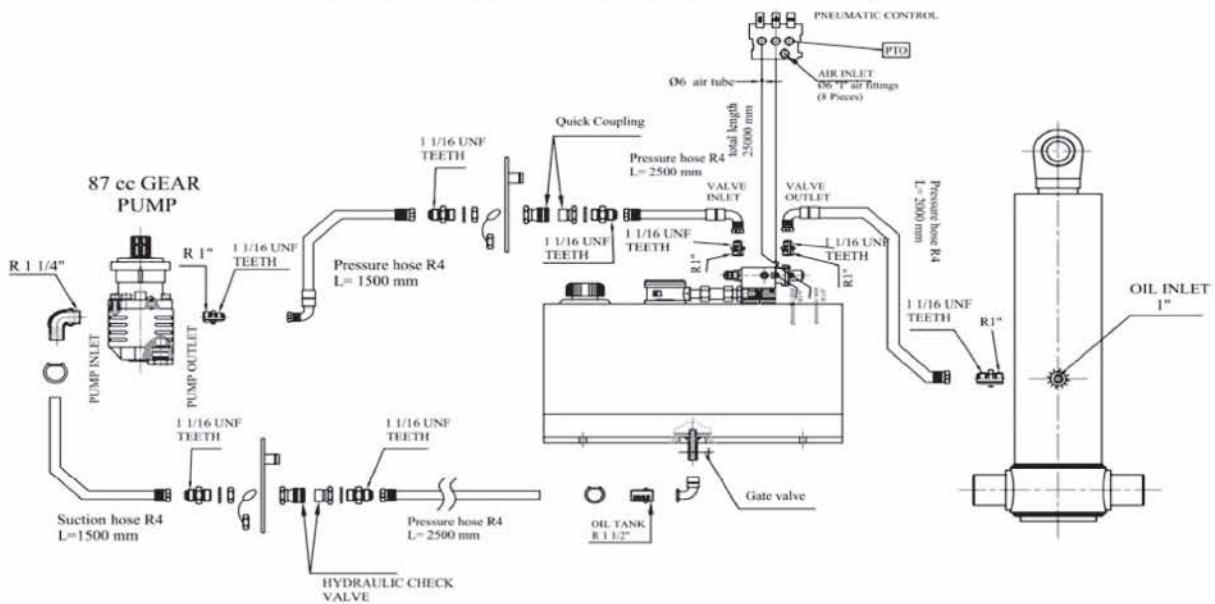
GRANTRUCK Group

# HYDRAULIC KITS

## 16 M<sup>3</sup> HYDRAULIC KIT



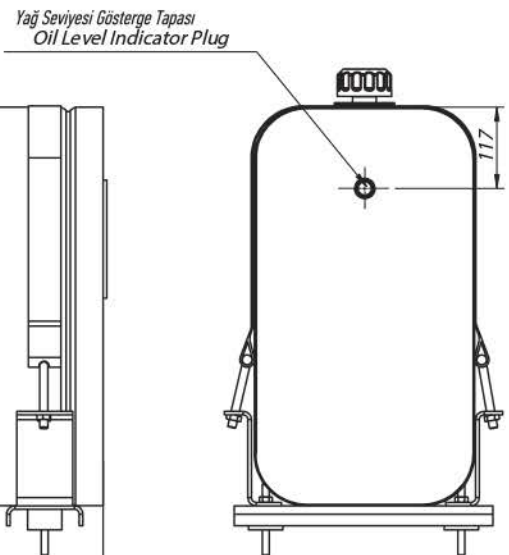
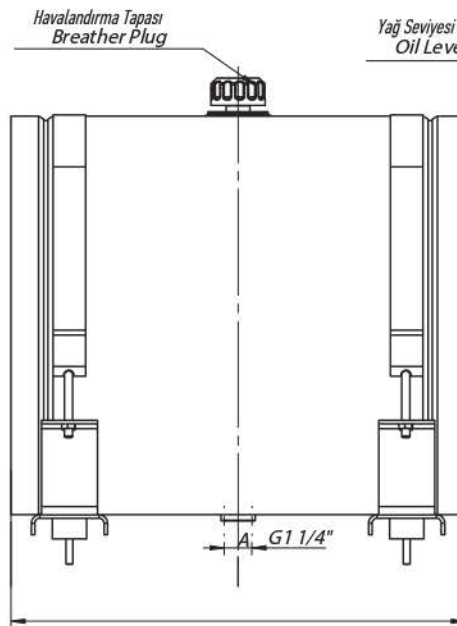
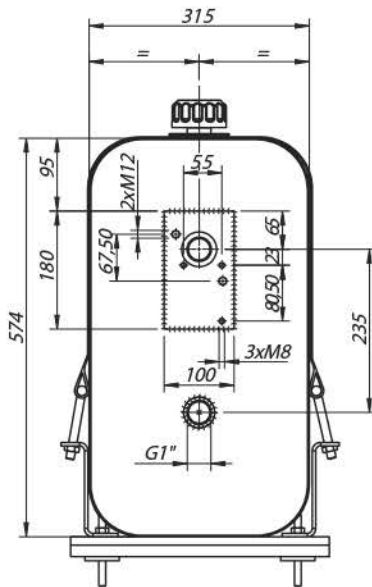
## 24-32 M<sup>3</sup> HYDRAULIC KIT





TEKNİK VERİ / TECHNICAL DATA

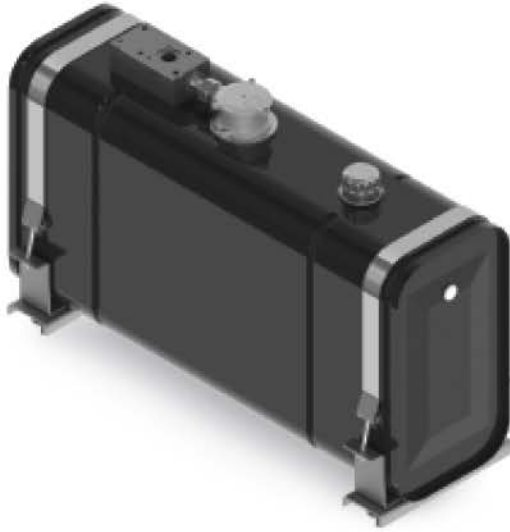
Kapasite (Lt) Capacity (Lt)	A
55	370
70	470
80	520
100	650
120	740
180	1090
200	1200





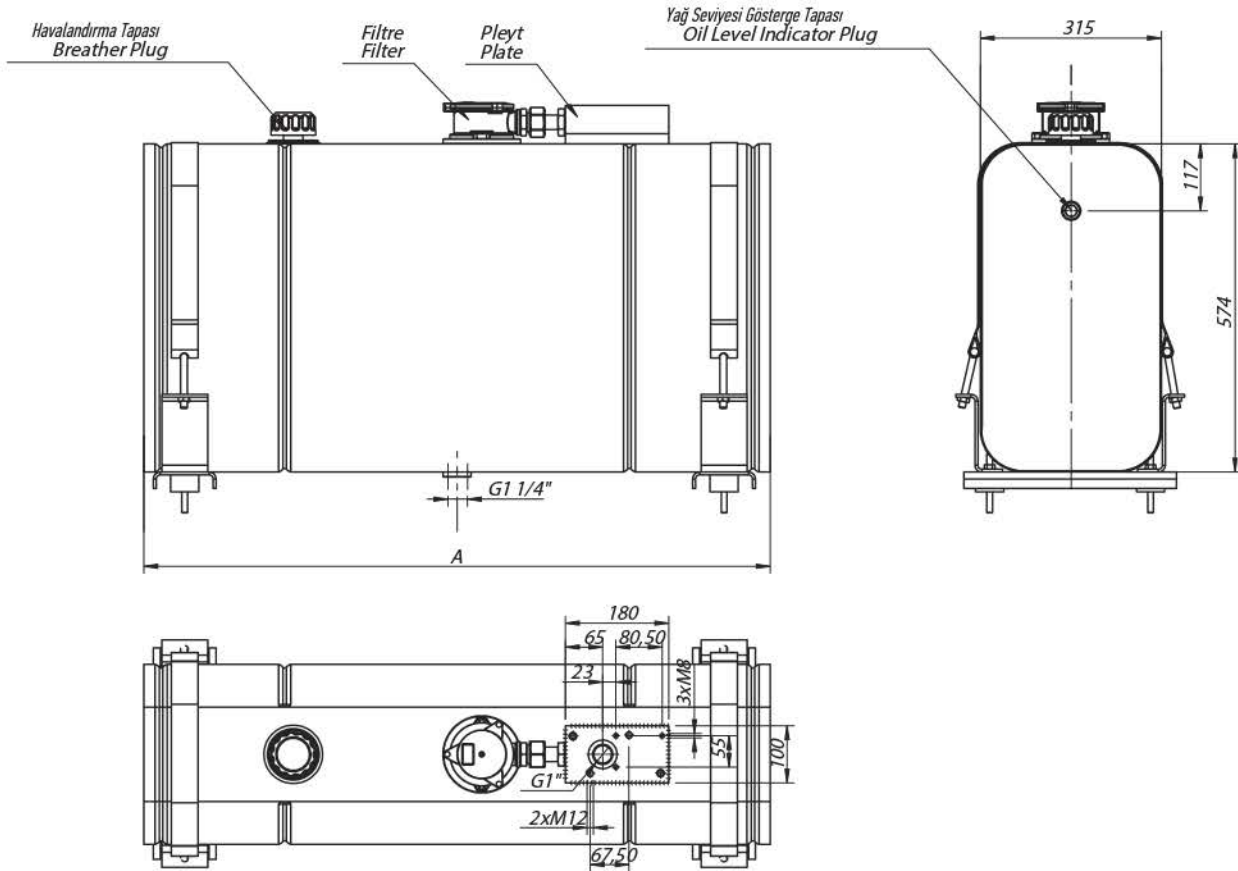
GRANTRUCK

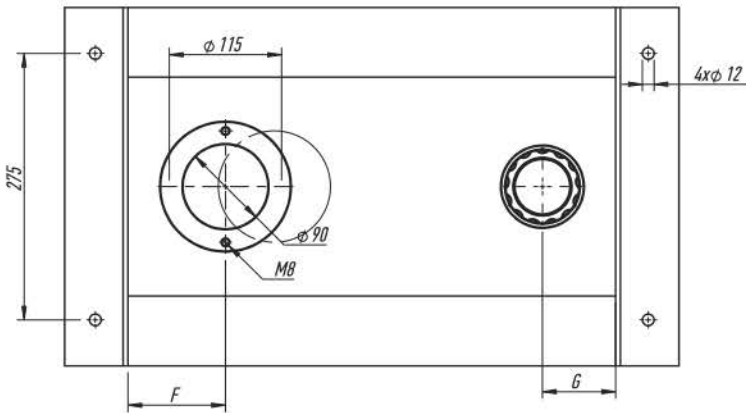
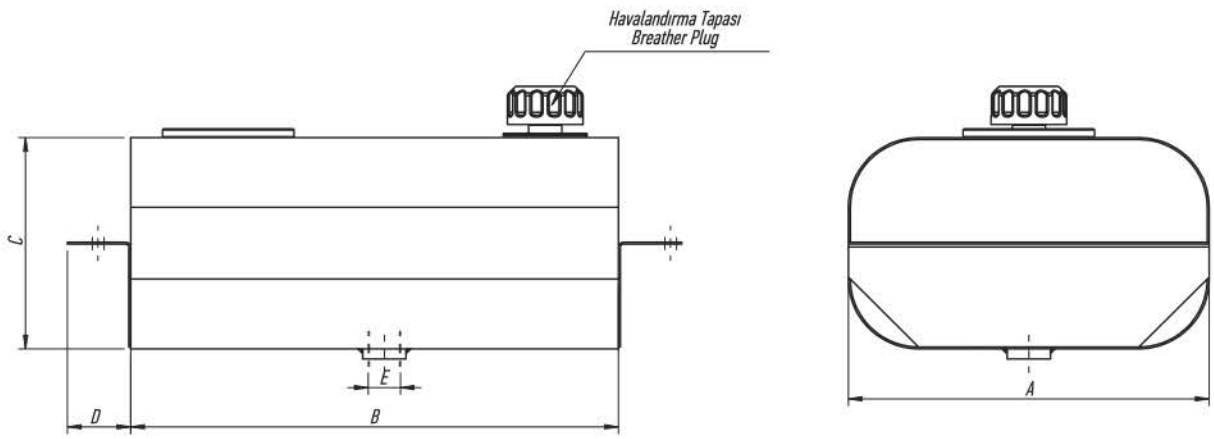
GRANTRUCK Group



TEKNİK VERİ / TECHNICAL DATA

Kapasite (Lt) Capacity (Lt)	A
100	650
120	745
150	925
180	1090
200	1200





TEKNİK VERİ / TECHNICAL DATA

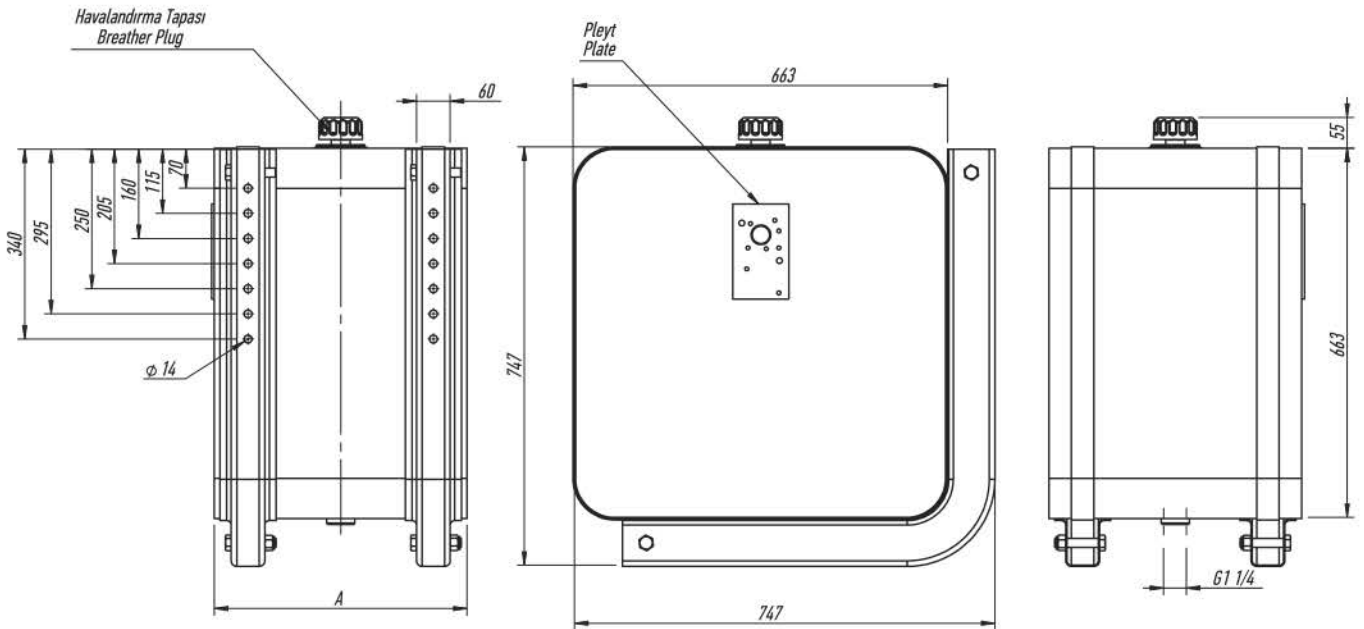
Kapasite (Lt) Capacity (Lt)	A	B	C	D	E	F	G
25	370	320	270	65	G1"	100	75
35	370	500	220	65		100	75
50	360	500	320	65	G1 1/4"	150	100
60	360	640	300	65		150	100





TEKNİK VERİ / TECHNICAL DATA

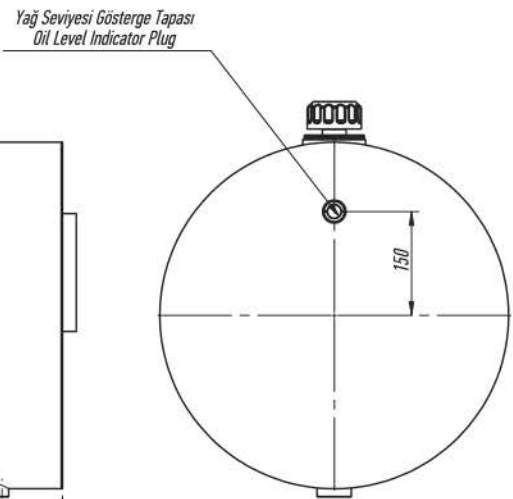
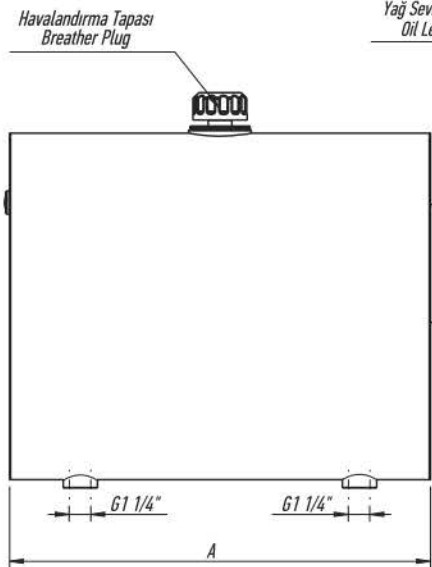
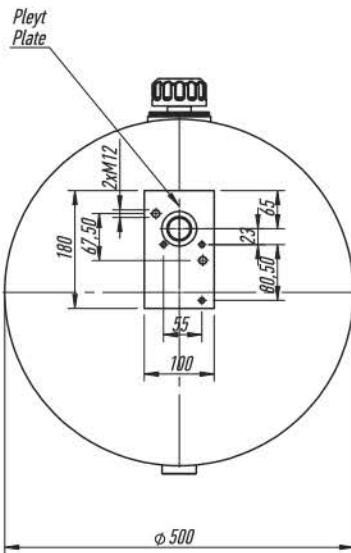
Kapasite (Lt) Capacity (Lt)	A
165	420
180	450
200	500





## TEKNİK VERİ / TECHNICAL DATA

Kapasite (Lt) Capacity (Lt)	A
60	300
80	400
120	600
200	1000





## TEKNİK VERİ / TECHNICAL DATA

Kapasite (Lt) Capacity (Lt)	A
100	350
150	500
180	600
250	800

